



## Product catalogue



**The finest hose clip in the world**

# Company

Jubilee® Clips were the first worm drive hose clamps, manufactured continuously in the UK since 1921. The company founder, Lumley Robinson, held the first patent for worm drive hose clips. The name Jubilee® Clip remains a registered trademark and symbol of quality throughout the world. The success of the company is based on the principal foundation of quality. Jubilee is a company that you can rely on for quality of products and service.



## Quality

We manufacture our products to the most stringent British and international standards. Every aspect of performance is rigorously scrutinised including corrosion resistance, pressure sealing, dimensional characteristics and destructive tests. These mechanical, hydraulic and chemical performance assessments of our products are further verified independently before certification.



BS:5315 is regarded as the highest standard for worm drive clamps covering performance as well as dimensions.



Lloyds Register type approval certification is an independently tested marine standard confirming that products will meet the rigorous requirements of marine environments and applications. LR has mutual recognition with ABS (American Bureau of Shipping).



ISO 9001 Quality Management System is the globally recognised, independently audited and certified quality standard.



ISO 14001 Environmental Management System shows our commitment to the environment. We were an early adopter of this standard and it drives us to be the most environmentally conscious hose clamp manufacturer in the world.



DIN 3017 is the German standard for hose clamps covering dimensional and mechanical requirements. Part 1 refers to worm drive clamps, our Original Range and Light Range clips and part 3 refers to GBS (hinge jointed bolt clamps), our Superclamp range.



DIN 3016 is the German standard for retaining clamps such as our P-clips.



SAE J1508 is the Society of Automotive Engineers' standard for hose clamps and covers a number of clamp types giving different parameters for each.

# Materials

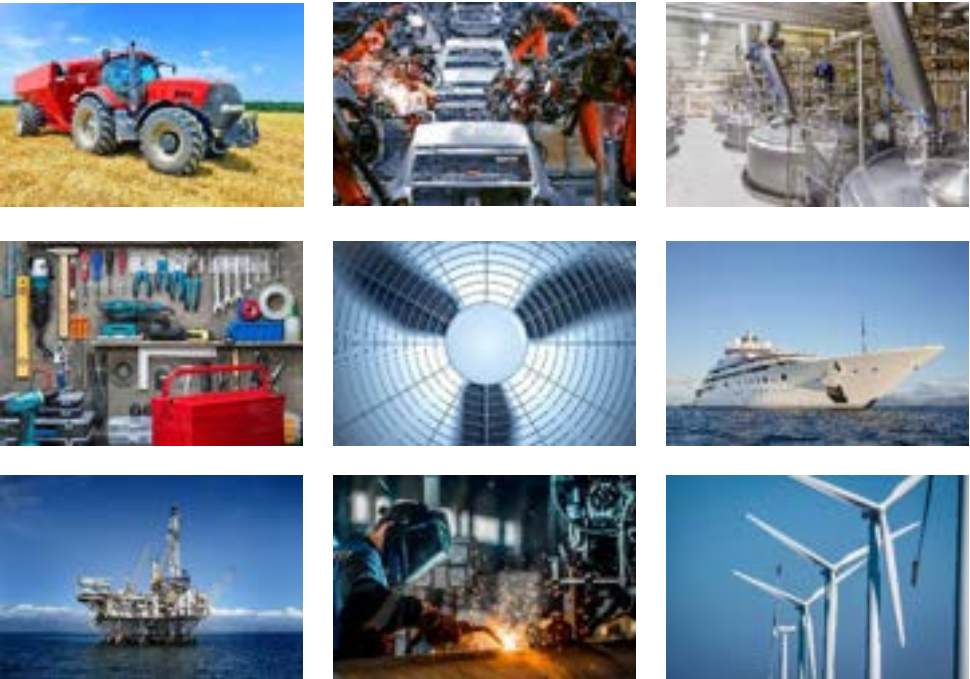
Whatever your environment, at Jubilee, we have the right material. From the most corrosion resistant mild steel treatments available to the highest specification stainless steels

Mild Steel Zinc Protected	Mild Steel, Carbon Steel, Zinc Plated, W1
304 Stainless Steel	AISI304, 18/8, A2, V2A, W4
316 Stainless Steel	AISI316, 18/10, A4, V4A, W5

## Corrosion Resistance NSS Test

At Jubilee Clips we conduct Neutral Salt Spray tests (NSS) according to ISO 9227:2006. The NSS test is conducted in a sealed chamber at 35 °C, where a 5% NaCl solution with a PH value of between 6.5 and 7.2 is sprayed continuously onto the clips. The duration of time shown in this product brochure shows the minimum number of hours the clips are able to withstand the salt spray test without significant signs of corrosion (red rust formation).

## Industry Sectors



Industry Symbols:	
	Agricultural
	Automotive
	Food
	Hardware/DIY
	Industrial
	Marine
	Oil/Gas
	Ventilation
	Electrical

# **JUBILEE® CLIPS**

## **PRODUCT OVERVIEW**

	<b>Page</b>
<b>Original Range</b>	<b>6</b>
<b>Mild Steel</b>	<b>7</b>
<b>304 Stainless Steel</b>	<b>8</b>
<b>316 Stainless Steel</b>	<b>9</b>
<b>Superclamps</b>	<b>10</b>
<b>Mild Steel</b>	<b>11</b>
<b>304 Stainless Steel</b>	<b>12</b>
<b>316 Stainless Steel</b>	<b>13</b>
<b>High Torque</b>	<b>14</b>
<b>304 Stainless Steel</b>	<b>15</b>
<b>316 Stainless Steel</b>	<b>16</b>
<b>Multiband</b>	<b>17</b>
<b>11mm Mild Steel</b>	<b>18</b>
<b>11mm 304 Stainless Steel</b>	<b>19</b>
<b>11mm 316 Stainless Steel</b>	<b>20</b>
<b>7mm Stainless Steel</b>	<b>21</b>
<b>Quick Release Straps</b>	<b>22</b>
<b>Mild Steel</b>	<b>23</b>
<b>304 Stainless Steel</b>	<b>24</b>
<b>7mm Stainless Steel</b>	<b>25</b>
<b>Flexiband</b>	<b>26</b>
<b>304 Stainless Steel</b>	<b>27</b>
<b>P Clips</b>	<b>28</b>
<b>Mild Steel</b>	<b>29</b>
<b>304 Stainless Steel</b>	<b>30</b>
<b>316 Stainless Steel</b>	<b>31</b>
<b>O Clips</b>	<b>32</b>
<b>Mild Steel</b>	<b>33</b>
<b>304 Stainless Steel</b>	<b>33</b>

<b>Light Range</b>	<b>34</b>
<b>Mild Steel</b>	<b>35</b>
<b>304 Stainless Steel</b>	<b>36</b>
<b>Wingspade</b>	<b>37</b>
<b>Mild Steel</b>	<b>37</b>
<b>Juniors</b>	<b>38</b>
<b>Mild Steel</b>	<b>38</b>
<b>304 Stainless Steel</b>	<b>38</b>
<b>CV Boot Clip</b>	<b>39</b>
<b>304 Stainless Steel</b>	<b>39</b>
<b>Packs and Dispensers</b>	<b>40</b>
<b>Tools</b>	<b>43</b>

# ORIGINAL RANGE

The original Jubilee® Clip; our patented invention that founded our company and a whole industry. Our sturdy worm drive hose clip is highly versatile and finds applications in every industry. Available as a mild steel zinc protected or stainless steel clamp in both 304 (18/8) and 316 (18/10) grades of stainless steel; our product uniquely has a band that is continuously threaded, enabling extra flexibility when adjusting the clip to the correct size. The smooth inside profile of the band and rolled edges give protection for all types of hoses including soft hoses made from rubber or silicone.



Our original Jubilee® Clips are independently tested by the British Standards Institute (BSi) and carry the British Standard Kitemark™, which is universally regarded as the most stringent Standard there is for a hose clip. Both grades of stainless steel clips are also certified by Lloyd's Register for marine use.

At Jubilee® we never mix materials, as this ensures highest levels of corrosion resistance, whereas when using mixed materials, such as in W2 hose clips, one material will be sacrificed in favour of another and will corrode much quicker than when only one material is used.

- Made to BS 5315
- Meet DIN 3017-1 and SS 2298 requirements
- Conform to SAE J1508 type FE
- Stainless steel versions are approved by Lloyds Register for use in Marine, Offshore and Industrial applications



## Available In

Mild Steel Zinc Protected

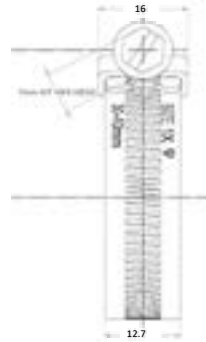
304 Stainless Steel

316 Stainless Steel



# ORIGINAL RANGE

## Mild Steel Zinc Protected



Part No.	BS No.	Adjustment mm	Adjustment Inches	Band Width mm	Band Thickness mm	Recommended Torque Nm	Maximum Torque Nm	Maximum Pressure PSI	Part No.
000MS	12	9.5- 12	3/8- 1/2	9.3	0.7	3.4	4.5	203	000MS
M00MS	16	11- 16	1/2-5/8	9.3	0.7	3.4	4.5	203	M00MS
00MS	20	13- 20	1/2-3/4	9.3	0.7	3.4	4.5	203	00MS
0MS	22	16- 22	5/8- 7/8	12.7	0.9	4.2	5.6	203	0MS
0XMS	25	18- 25	3/4-1	12.7	0.9	4.2	5.6	203	0XMS
1AMS	30	22- 30	7/8-1 1/8	12.7	0.9	5.1	6.8	203	1AMS
1MS	35	25- 35	1-1 3/8	12.7	0.9	5.1	6.8	102	1MS
1XMS	40	30- 40	1 1/8-1 5/8	12.7	0.9	5.1	6.8	102	1XMS
1MMS	45	32- 45	1 1/4-1 3/4	12.7	0.9	5.1	6.8	102	1MMS
2AMS	50	35- 50	1 3/8-2	12.7	0.9	5.9	7.9	102	2AMS
2MS	55	40- 55	1 5/8-2 1/8	12.7	0.9	5.9	7.9	102	2MS
2XMS	60	45- 60	1 3/4-2 3/8	12.7	0.9	5.9	7.9	102	2XMS
3MS	70	55- 70	2 1/8-2 3/4	12.7	0.9	6.7	9	102	3MS
3XMS	80	60- 80	2 3/8-3 1/8	12.7	0.9	6.7	9	44	3XMS
4MS	90	70- 90	2 3/4-3 1/2	12.7	0.9	6.7	9	44	4MS
4XMS	100	85-100	3 1/4-4	12.7	0.9	6.7	9	44	4XMS
5MS	120	90-120	3 1/2-4 3/4	12.7	0.9	6.7	9	44	5MS
6MS	140	110-140	4 3/8-5 1/2	12.7	0.9	6.7	9	44	6MS
6XMS	150	120-150	4 3/4-5 7/8	12.7	0.9	5.9	7.9	18	6XMS
7MS	165	135-165	5 1/4-6 1/2	12.7	0.9	5.9	7.9	18	7MS
7.5MS	190	158-190	6 1/4-7 1/2	12.7	0.9	5.9	7.9	18	7.5MS
8.5MS	216	184-216	7 1/4-8 1/2	12.7	0.9	5.9	7.9	18	8.5MS
9.5MS	242	210-242	8 1/4-9 1/2	12.7	0.9	5.9	7.9	18	9.5MS
10.5MS	267	235-267	9 1/4-10 1/2	12.7	0.9	5.9	7.9	18	10.5MS
11.5MS	292	260-292	10 1/4-11 1/2	12.7	0.9	5.9	7.9	18	11.5MS
12.5MS	318	286-318	11 1/4-12 1/2	12.7	0.9	5.9	7.9	18	12.5MS

For larger sizes please contact us

### Quality Assurance



SAE J1508 Surface Vehicle Standards-Hose Clamp Specifications, Type FE is referenced in the quality control methods for the design/manufacture of Original Range Jubilee Clips.

Mild Steel Zinc Protected

### Corrosion Resistance

240 hours NSS Test

### Fastening

7mm A/F screw

### Industry Recommendations



# ORIGINAL RANGE 304 Stainless Steel



Part No.	BS No.	Adjustment mm	Inches	Band Width mm	Band Thickness mm	Recommended Torque Nm	Maximum Torque Nm	Maximum Pressure PSi	Part No.
000SS	12	9.5- 12	3/8- 1/2	9.3	0.7	3.4	4.5	203	000SS
M00SS	16	11- 16	1/2-5/8	9.3	0.7	3.4	4.5	203	M00SS
00SS	20	13- 20	1/2-3/4	9.3	0.7	3.4	4.5	203	00SS
0SS	22	16- 22	5/8- 7/8	12.7	0.9	4.2	5.6	203	0SS
0XSS	25	18- 25	3/4-1	12.7	0.9	4.2	5.6	203	0XSS
1ASS	30	22- 30	7/8-1 1/8	12.7	0.9	5.1	6.8	203	1ASS
1SS	35	25- 35	1-1 3/8	12.7	0.9	5.1	6.8	102	1SS
1XSS	40	30- 40	1 1/8-1 5/8	12.7	0.9	5.1	6.8	102	1XSS
1MSS	45	32- 45	1 1/4-1 3/4	12.7	0.9	5.1	6.8	102	1MSS
2ASS	50	35- 50	1 3/8-2	12.7	0.9	5.9	7.9	102	2ASS
2SS	55	40- 55	1 5/8-2 1/8	12.7	0.9	5.9	7.9	102	2SS
2XSS	60	45- 60	1 3/4-2 3/8	12.7	0.9	5.9	7.9	102	2XSS
3SS	70	55- 70	2 1/8-2 3/4	12.7	0.9	6.7	9	102	3SS
3XSS	80	60- 80	2 3/8-3 1/8	12.7	0.9	6.7	9	44	3XSS
4SS	90	70- 90	2 3/4-3 1/2	12.7	0.9	6.7	9	44	4SS
4XSS	100	85-100	3 1/4-4	12.7	0.9	6.7	9	44	4XSS
5SS	120	90-120	3 1/2-4 3/4	12.7	0.9	6.7	9	44	5SS
6SS	140	110-140	4 3/8-5 1/2	12.7	0.9	6.7	9	44	6SS
6XSS	150	120-150	4 3/4-5 7/8	12.7	0.9	5.9	7.9	18	6XSS
7SS	165	135-165	5 1/4-6 1/2	12.7	0.9	5.9	7.9	18	7SS
7.5SS	190	158-190	6 1/4-7 1/2	12.7	0.9	5.9	7.9	18	7.5SS
8.5SS	216	184-216	7 1/4-8 1/2	12.7	0.9	5.9	7.9	18	8.5SS
9.5SS	242	210-242	8 1/4-9 1/2	12.7	0.9	5.9	7.9	18	9.5SS
10.5SS	267	235-267	9 1/4-10 1/2	12.7	0.9	5.9	7.9	18	10.5SS
11.5SS	292	260-292	10 1/4-11 1/2	12.7	0.9	5.9	7.9	18	11.5SS
12.5SS	318	286-318	11 1/4-12 1/2	12.7	0.9	5.9	7.9	18	12.5SS

For larger sizes please contact us

## Quality Assurance



SAE J1508 Surface Vehicle Standards-Hose Clamp Specifications, Type FE is referenced in the quality control methods for the design/manufacture of Original Range Jubilee Clips.

## Corrosion Resistance

1000 hours NSS Test

## Fastening

7mm A/F screw

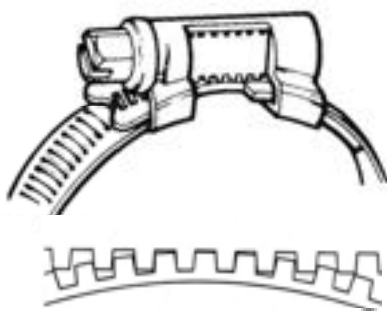
## Industry Recommendations



**304 Stainless Steel**



# ORIGINAL RANGE 316 Stainless Steel (HNSS)



Part No.	BS No.	Adjustment mm	Inches	Band Width mm	Band Thickness mm	Recommended Torque Nm	Maximum Torque Nm	Maximum Pressure PSi	Part No.
000SS316	12	9.5- 12	3/8- 1/2	9.3	0.7	3.4	4.5	203	000SS316
M00SS316	16	11- 16	1/2-5/8	9.3	0.7	3.4	4.5	203	M00SS316
00SS316	20	13- 20	1/2-3/4	9.3	0.7	3.4	4.5	203	00SS316
0SS316	22	16- 22	5/8- 7/8	12.7	0.9	4.2	5.6	203	0SS316
0XSS316	25	18- 25	3/4-1	12.7	0.9	4.2	5.6	203	0XSS316
1ASS316	30	22- 30	7/8-1 1/8	12.7	0.9	5.1	6.8	203	1ASS316
1SS316	35	25- 35	1-1 3/8	12.7	0.9	5.1	6.8	102	1SS316
1XSS316	40	30- 40	1 1/8-1 5/8	12.7	0.9	5.1	6.8	102	1XSS316
1MSS316	45	32- 45	1 1/4-1 3/4	12.7	0.9	5.1	6.8	102	1MSS316
2ASS316	50	35- 50	1 3/8-2	12.7	0.9	5.9	7.9	102	2ASS316
2SS316	55	40- 55	1 5/8-2 1/8	12.7	0.9	5.9	7.9	102	2SS316
2XSS316	60	45- 60	1 3/4-2 3/8	12.7	0.9	5.9	7.9	102	2XSS316
3SS316	70	55- 70	2 1/8-2 3/4	12.7	0.9	6.7	9	102	3SS316
3XSS316	80	60- 80	2 3/8-3 1/8	12.7	0.9	6.7	9	44	3XSS316
4SS316	90	70- 90	2 3/4-3 1/2	12.7	0.9	6.7	9	44	4SS316
4XSS316	100	85-100	3 1/4-4	12.7	0.9	6.7	9	44	4XSS316
5SS316	120	90-120	3 1/2-4 3/4	12.7	0.9	6.7	9	44	5SS316
6SS316	140	110-140	4 3/8-5 1/2	12.7	0.9	6.7	9	44	6SS316
6XSS316	150	120-150	4 3/4-5 7/8	12.7	0.9	5.9	7.9	18	6XSS316
7SS316	165	135-165	5 1/4-6 1/2	12.7	0.9	5.9	7.9	18	7SS316
7.5SS316	190	158-190	6 1/4-7 1/2	12.7	0.9	5.9	7.9	18	7.5SS316
8.5SS316	216	184-216	7 1/4-8 1/2	12.7	0.9	5.9	7.9	18	8.5SS316
9.5SS316	242	210-242	8 1/4-9 1/2	12.7	0.9	5.9	7.9	18	9.5SS316
10.5SS316	267	235-267	9 1/4-10 1/2	12.7	0.9	5.9	7.9	18	10.5SS316
11.5SS316	292	260-292	10 1/4-11 1/2	12.7	0.9	5.9	7.9	18	11.5SS316
12.5SS316	318	286-318	11 1/4-12 1/2	12.7	0.9	5.9	7.9	18	12.5SS316

For larger sizes please contact us

## Quality Assurance



SAE J1508 Surface Vehicle Standards-Hose Clamp Specifications, Type FE is referenced in the quality control methods for the design/manufacture of Original Range Jubilee Clips.

## Corrosion Resistance

2000 hours NSS Test

## Fastening

7mm A/F screw

## Industry Recommendations



316 Stainless Steel

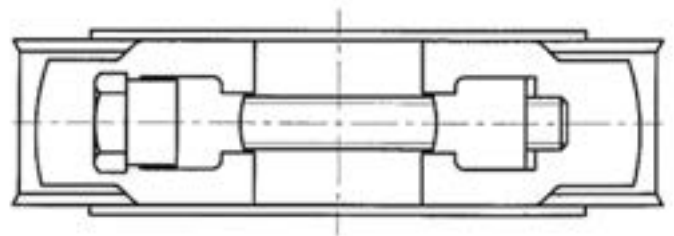
# SUPERCLAMPS



We manufacture our Jubilee® Superclamps to DIN3017 in zinc plated mild steel, all 304 stainless steel and all 316 stainless steel.

Also known as 'GBS' or barrel hardware clamps these can be used in place of SAE J1508 type TB or T-Bolt style clamps. These heavy duty industrial clamps achieve the highest tightening torques of any hose clamp and can withstand the rigors and abuse of the hardest of applications in any industry, as confirmed by our Lloyds Register Type Approval for this range of clamps.

- Single nut adjustment
- Smooth band protects hose
- Bridge piece ensures 360° seal
- Solid trunnion maximises torque
- Conform to DIN 3017-3 for diameters up to 225mm
- 304 and 316 stainless steel Superclamps up to 225mm are Lloyds Register type approved for use in Marine, Offshore and Industrial applications



## Available In

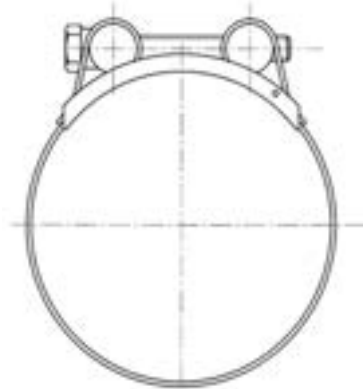
Mild Steel Zinc Plated

304 Stainless Steel

316 Stainless Steel

# SUPERCLAMPS

## Mild Steel Zinc Plated



Part No.	Adjustment mm	Band Width mm	Band Thickness mm	Recommended Torque Nm	Maximum Torque Nm	Screw Head mm	Part No.
JSC019MS	17-19	18.0	0.6	4.5	6.0	8	JSC019MS
JSC022MS	20-22	18.0	0.6	4.5	6.0	8	JSC022MS
JSC025MS	23-25	18.0	0.6	4.5	6.0	8	JSC025MS
JSC028MS	26-28	18.0	0.6	4.5	6.0	8	JSC028MS
JSC031MS	29-31	18.0	0.6	4.5	6.0	8	JSC031MS
JSC035MS	32-35	20.0	1.0	6.0	8.0	10	JSC035MS
JSC039MS	36-39	20.0	1.0	6.0	8.0	10	JSC039MS
JSC043MS	40-43	20.0	1.0	6.0	8.0	10	JSC043MS
JSC047MS	44-47	20.0	1.0	6.0	8.0	10	JSC047MS
JSC051MS	48-51	20.0	1.0	6.0	8.0	10	JSC051MS
JSC055MS	52-55	20.0	1.0	6.0	8.0	10	JSC055MS
JSC059MS	56-59	20.0	1.0	6.0	8.0	10	JSC059MS
JSC063MS	60-63	20.0	1.0	6.0	8.0	10	JSC063MS
JSC067MS	64-67	25.0	1.5	18.5	25.0	13	JSC067MS
JSC073MS	68-73	25.0	1.5	18.5	25.0	13	JSC073MS
JSC079MS	74-79	25.0	1.5	18.5	25.0	13	JSC079MS
JSC085MS	80-85	25.0	1.5	18.5	25.0	13	JSC085MS
JSC091MS	86-91	25.0	1.5	18.5	25.0	13	JSC091MS
JSC097MS	92-97	25.0	1.5	18.5	25.0	13	JSC097MS
JSC103MS	98-103	25.0	1.5	18.5	25.0	13	JSC103MS
JSC112MS	104-112	25.0	1.5	18.5	25.0	13	JSC112MS
JSC121MS	113-121	25.0	1.5	18.5	25.0	13	JSC121MS
JSC130MS	122-130	25.0	1.5	18.5	25.0	13	JSC130MS
JSC139MS	131-139	25.0	1.5	18.5	25.0	13	JSC139MS
JSC148MS	140-148	25.0	1.5	18.5	25.0	13	JSC148MS
JSC161MS	149-161	25.0	1.8	18.5	25.0	13	JSC161MS
JSC174MS	162-174	25.0	1.8	18.5	25.0	13	JSC174MS
JSC187MS	175-187	25.0	1.8	18.5	25.0	13	JSC187MS
JSC200MS	188-200	25.0	1.8	18.5	25.0	13	JSC200MS
JSC213MS	201-213	25.0	1.8	18.5	25.0	13	JSC213MS
JSC226MS	214-226	25.0	1.8	18.5	25.0	13	JSC226MS
JSC239MS	227-239	25.0	1.8	18.5	25.0	13	JSC239MS
JSC255MS	240-255	25.0	1.8	18.5	25.0	13	JSC255MS
JSC265MS	253-265	25.0	1.8	18.5	25.0	13	JSC265MS

### Quality Assurance



SAE J1508 Surface Vehicle Standards-Hose Clamp Specifications, Type TB is referenced in the quality control methods for the design/manufacture of the Jubilee Superclamps Range.

### Corrosion Resistance

168 hours NSS Test

### Fastening

A/F screw – see table

### Industry Recommendations



Mild Steel Zinc Plated

# SUPERCLAMPS

## 304 Stainless Steel



Part No.	Adjustment mm	Band Width mm	Band Thickness mm	Recommended Torque Nm	Maximum Torque Nm	Screw Head mm	Part No.
JSC019SS	17-19	18.0	0.6	4.5	6.0	8	JSC019SS
JSC022SS	20-22	18.0	0.6	4.5	6.0	8	JSC022SS
JSC025SS	23-25	18.0	0.6	4.5	6.0	8	JSC025SS
JSC028SS	26-28	18.0	0.6	4.5	6.0	8	JSC028SS
JSC031SS	29-31	18.0	0.6	4.5	6.0	8	JSC031SS
JSC035SS	32-35	20.0	1.0	6.0	8.0	10	JSC035SS
JSC039SS	36-39	20.0	1.0	6.0	8.0	10	JSC039SS
JSC043SS	40-43	20.0	1.0	6.0	8.0	10	JSC043SS
JSC047SS	44-47	20.0	1.0	6.0	8.0	10	JSC047SS
JSC051SS	48-51	20.0	1.0	6.0	8.0	10	JSC051SS
JSC055SS	52-55	20.0	1.0	6.0	8.0	10	JSC055SS
JSC059SS	56-59	20.0	1.0	6.0	8.0	10	JSC059SS
JSC063SS	60-63	20.0	1.0	6.0	8.0	10	JSC063SS
JSC067SS	64-67	25.0	1.2	18.5	25.0	13	JSC067SS
JSC073SS	68-73	25.0	1.2	18.5	25.0	13	JSC073SS
JSC079SS	74-79	25.0	1.2	18.5	25.0	13	JSC079SS
JSC085SS	80-85	25.0	1.2	18.5	25.0	13	JSC085SS
JSC091SS	86-91	25.0	1.2	18.5	25.0	13	JSC091SS
JSC097SS	92-97	25.0	1.2	18.5	25.0	13	JSC097SS
JSC103SS	98-103	25.0	1.2	18.5	25.0	13	JSC103SS
JSC112SS	104-112	25.0	1.2	18.5	25.0	13	JSC112SS
JSC121SS	113-121	25.0	1.2	18.5	25.0	13	JSC121SS
JSC130SS	122-130	25.0	1.2	18.5	25.0	13	JSC130SS
JSC139SS	131-139	25.0	1.2	18.5	25.0	13	JSC139SS
JSC148SS	140-148	25.0	1.2	18.5	25.0	13	JSC148SS
JSC161SS	149-161	25.0	1.5	18.5	25.0	13	JSC161SS
JSC174SS	162-174	25.0	1.5	18.5	25.0	13	JSC174SS
JSC187SS	175-187	25.0	1.5	18.5	25.0	13	JSC187SS
JSC200SS	188-200	25.0	1.5	18.5	25.0	13	JSC200SS
JSC213SS	201-213	25.0	1.5	18.5	25.0	13	JSC213SS
JSC226SS	214-226	25.0	1.5	18.5	25.0	13	JSC226SS
JSC239SS	227-239	25.0	1.5	18.5	25.0	13	JSC239SS
JSC255SS	240-255	25.0	1.5	18.5	25.0	13	JSC255SS
JSC265SS	253-265	25.0	1.5	18.5	25.0	13	JSC265SS

### Quality Assurance



SAE J1508 Surface Vehicle Standards-Hose Clamp Specifications, Type TB is referenced in the quality control methods for the design/manufacture of the Jubilee Superclamps Range.

### Corrosion Resistance

1000 hours NSS Test

### Fastening

A/F screw – see table

### Industry Recommendations

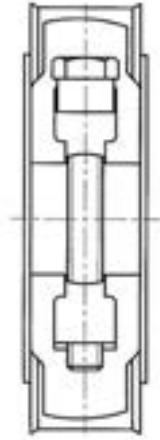


**304 Stainless Steel**



# SUPERCLAMPS

## 316 Stainless Steel (HNSS)



Part No.	Adjustment mm	Band Width mm	Band Thickness mm	Recommended Torque Nm	Maximum Torque Nm	Screw Head mm	Part No.
JSC019SS316	17-19	18.0	0.6	4.5	6.0	8	JSC019SS316
JSC022SS316	20-22	18.0	0.6	4.5	6.0	8	JSC022SS316
JSC025SS316	23-25	18.0	0.6	4.5	6.0	8	JSC025SS316
JSC028SS316	26-28	18.0	0.6	4.5	6.0	8	JSC028SS316
JSC031SS316	29-31	18.0	0.6	4.5	6.0	8	JSC031SS316
JSC035SS316	32-35	20.0	1.0	6.0	8.0	10	JSC035SS316
JSC039SS316	36-39	20.0	1.0	6.0	8.0	10	JSC039SS316
JSC043SS316	40-43	20.0	1.0	6.0	8.0	10	JSC043SS316
JSC047SS316	44-47	20.0	1.0	6.0	8.0	10	JSC047SS316
JSC051SS316	48-51	20.0	1.0	6.0	8.0	10	JSC051SS316
JSC055SS316	52-55	20.0	1.0	6.0	8.0	10	JSC055SS316
JSC059SS316	56-59	20.0	1.0	6.0	8.0	10	JSC059SS316
JSC063SS316	60-63	20.0	1.0	6.0	8.0	10	JSC063SS316
JSC067SS316	64-67	25.0	1.2	18.5	25.0	13	JSC067SS316
JSC073SS316	68-73	25.0	1.2	18.5	25.0	13	JSC073SS316
JSC079SS316	74-79	25.0	1.2	18.5	25.0	13	JSC079SS316
JSC085SS316	80-85	25.0	1.2	18.5	25.0	13	JSC085SS316
JSC091SS316	86-91	25.0	1.2	18.5	25.0	13	JSC091SS316
JSC097SS316	92-97	25.0	1.2	18.5	25.0	13	JSC097SS316
JSC103SS316	98-103	25.0	1.2	18.5	25.0	13	JSC103SS316
JSC112SS316	104-112	25.0	1.2	18.5	25.0	13	JSC112SS316
JSC121SS316	113-121	25.0	1.2	18.5	25.0	13	JSC121SS316
JSC130SS316	122-130	25.0	1.2	18.5	25.0	13	JSC130SS316
JSC139SS316	131-139	25.0	1.2	18.5	25.0	13	JSC139SS316
JSC148SS316	140-148	25.0	1.2	18.5	25.0	13	JSC148SS316
JSC161SS316	149-161	25.0	1.5	18.5	25.0	13	JSC161SS316
JSC174SS316	162-174	25.0	1.5	18.5	25.0	13	JSC174SS316
JSC187SS316	175-187	25.0	1.5	18.5	25.0	13	JSC187SS316
JSC200SS316	188-200	25.0	1.5	18.5	25.0	13	JSC200SS316
JSC213SS316	201-213	25.0	1.5	18.5	25.0	13	JSC213SS316
JSC226SS316	214-226	25.0	1.5	18.5	25.0	13	JSC226SS316
JSC239SS316	227-239	25.0	1.5	18.5	25.0	13	JSC239SS316
JSC255SS316	240-255	25.0	1.5	18.5	25.0	13	JSC255SS316
JSC265SS316	253-265	25.0	1.5	18.5	25.0	13	JSC265SS316

### Quality Assurance



SAE J1508 Surface Vehicle Standards-Hose Clamp Specifications, Type TB is referenced in the quality control methods for the design/manufacture of the Jubilee Superclamps Range.

### Corrosion Resistance

2000 hours NSS Test

### Fastening

A/F screw – see table

### Industry Recommendations



316 Stainless Steel

# HIGH TORQUE

Our High Torque Clips are the strongest worm-drive clamps available. The high clamping forces make this clip suitable for heavy duty applications where stubborn leakage or vibration issues make lesser clips and clamps unsuitable.

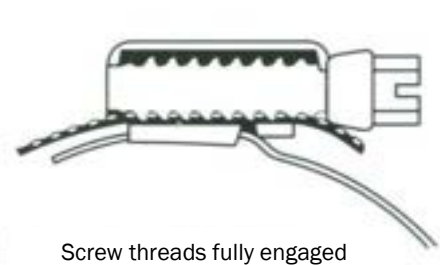


Jubilee High Torque clips are made of all 304 or 316 stainless steel, with a two part housing and cut through band, keeping the band straight at the point of engagement and fully engaging all of the screw thread; giving a superior tightening torque. Although not suitable for use on soft hoses, where the high forces and perforated band may cut into the hose, they are ideal where a high clamping force is required and with a flexible band material they can achieve a high level of friction even against a smooth surface such as a metal pole.

With a wide clamping range compared to alternative heavy duty clamps, stock requirements are reduced. The flexible band also offers better sealing at lower torques than nut and bolt style heavy duty clamps, which, combined with weight saving benefits, make Jubilee High Torque Clips a versatile and superior heavy duty clamp.

- Conform to SAE J1508 type HD
- Lloyds Register type approval for use in Marine, Offshore and Industrial applications and for use on reinforced hoses
- 8mm A/F slotted screw
- All 304 stainless steel, or, all 316 stainless steel
- Twice the tightening torque of standard worm drive hose clips which creates more than twice the band tension for stubborn leakage and high vibration applications
- Breaking torque of 17 Nm is comparable to conventional 'T' bolt clamps of equal size
- Recommended tightening torque 11.9 Nm (106 lbs in)

SECTION 'A'- 'A'



Screw threads fully engaged

Available in

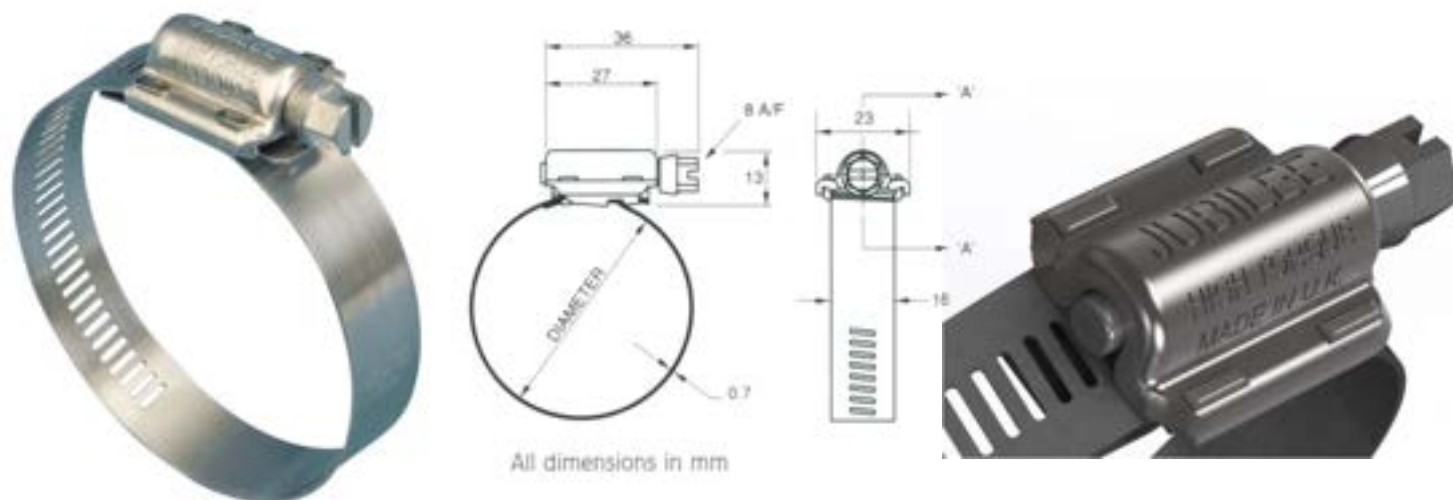
**304 Stainless Steel**

**316 Stainless Steel**





# HIGH TORQUE 304 Stainless Steel



Part No.	Adjustment mm	Inches	Band Width mm	Band Thickness mm	Recommended Torque Nm	Maximum Torque Nm	Maximum Pressure PSi	Part No.
HT035	20- 35	3/4-1 3/8	15.7	0.7	11.9	17.0	304.5	HT035
HT040	25- 40	1-1 5/8	15.7	0.7	11.9	17.0	304.5	HT040
HT045	25- 45	1-1 3/4	15.7	0.7	11.9	17.0	304.5	HT045
HT050	30- 50	1 1/4-2	15.7	0.7	11.9	17.0	304.5	HT050
HT055	35- 55	1 3/8-2 1/8	15.7	0.7	11.9	17.0	153.0	HT055
HT060	40- 60	1 5/8-2 3/8	15.7	0.7	11.9	17.0	153.0	HT060
HT065	45- 65	1 3/4-2 1/2	15.7	0.7	11.9	17.0	153.0	HT065
HT070	40- 70	1 5/8-2 3/4	15.7	0.7	11.9	17.0	153.0	HT070
HT080	60- 80	2 3/8-3 1/8	15.7	0.7	11.9	17.0	153.0	HT080
HT095	70- 95	2 3/4-3 3/4	15.7	0.7	11.9	17.0	153.0	HT095
HT100	80-100	3 1/8-4	15.7	0.7	11.9	17.0	66.0	HT100
HT120	90-120	3 1/2-4 3/4	15.7	0.7	11.9	17.0	66.0	HT120
HT140	110-140	4 3/8-5 1/2	15.7	0.7	11.9	17.0	66.0	HT140
HT160	130-160	5 1/8-6 1/4	15.7	0.7	11.9	17.0	66.0	HT160
HT180	150-180	5 7/8-7	15.7	0.7	11.9	17.0	30.0	HT180
HT200	170-200	6 3/4-7 7/8	15.7	0.7	11.9	17.0	30.0	HT200
HT220	190-220	7 1/2-8 5/8	15.7	0.7	11.9	17.0	30.0	HT220
HT240	210-240	8 1/4-9 1/2	15.7	0.7	11.9	17.0	30.0	HT240
HT260	230-260	9-10 1/4	15.7	0.7	11.9	17.0	30.0	HT260
HT280	250-280	9 7/8-11	15.7	0.7	11.9	17.0	30.0	HT280
HT300	270-300	10 5/8-11 3/4	15.7	0.7	11.9	17.0	30.0	HT300
HT320	290-320	11 3/8-12 1/2	15.7	0.7	11.9	17.0	30.0	HT320
HT340	310-340	12 1/4-13 3/8	15.7	0.7	11.9	17.0	n/a	HT340
HT360	330-360	13-14 1/8	15.7	0.7	11.9	17.0	n/a	HT360
HT380	350-380	13 3/4-15	15.7	0.7	11.9	17.0	n/a	HT380
HT400	370-400	14 1/2-15 3/4	15.7	0.7	11.9	17.0	n/a	HT400
HT420	390-420	15 3/8-16 1/2	15.7	0.7	11.9	17.0	n/a	HT420
HT440	410-440	16 1/8-17 1/4	15.7	0.7	11.9	17.0	n/a	HT440
HT460	430-460	17-18 1/8	15.7	0.7	11.9	17.0	n/a	HT460
HT480	450-480	17 3/4-18 7/8	15.7	0.7	11.9	17.0	n/a	HT480
HT500	470-500	18 1/2-19 5/8	15.7	0.7	11.9	17.0	n/a	HT500
HT520	490-520	19 5/16-20 1/2	15.7	0.7	11.9	17.0	n/a	HT520

## Quality Assurance



SAE J1508 Surface Vehicle Standards-Hose Clamp Specifications, Type HD is referenced in the quality control methods for the design/manufacture of the Jubilee High Torque Range of clips.

## Corrosion Resistance

1000 hours NSS Test

## Fastening

8mm A/F screw

## Industry Recommendations



304 Stainless Steel

# HIGH TORQUE 316 Stainless Steel



Part No.	Adjustment mm	Inches	Band Width mm	Band Thickness mm	Recommended Torque Nm	Maximum Torque Nm	Maximum Pressure PSI	Part No.
HT035SS316	20- 35	$\frac{3}{4}$ - $\frac{13}{8}$	15.7	0.7	11.9	17.0	304.5	HT035SS316
HT040SS316	25- 40	$1\frac{1}{8}$ - $\frac{5}{8}$	15.7	0.7	11.9	17.0	304.5	HT040SS316
HT045SS316	25- 45	$1\frac{3}{4}$	15.7	0.7	11.9	17.0	304.5	HT045SS316
HT050SS316	30- 50	$1\frac{1}{4}$ -2	15.7	0.7	11.9	17.0	304.5	HT050SS316
HT055SS316	35- 55	$\frac{13}{8}$ - $2\frac{1}{8}$	15.7	0.7	11.9	17.0	153.0	HT055SS316
HT060SS316	40- 60	$\frac{15}{8}$ - $2\frac{3}{8}$	15.7	0.7	11.9	17.0	153.0	HT060SS316
HT065SS316	45- 65	$\frac{13}{4}$ - $2\frac{1}{2}$	15.7	0.7	11.9	17.0	153.0	HT065SS316
HT070SS316	40- 70	$\frac{15}{8}$ - $2\frac{3}{4}$	15.7	0.7	11.9	17.0	153.0	HT070SS316
HT080SS316	60- 80	$2\frac{3}{8}$ - $3\frac{1}{8}$	15.7	0.7	11.9	17.0	153.0	HT080SS316
HT095SS316	70- 95	$2\frac{3}{4}$ - $3\frac{3}{4}$	15.7	0.7	11.9	17.0	153.0	HT095SS316
HT100SS316	80-100	$3\frac{1}{8}$ -4	15.7	0.7	11.9	17.0	66.0	HT100SS316
HT120SS316	90-120	$3\frac{1}{2}$ - $4\frac{3}{4}$	15.7	0.7	11.9	17.0	66.0	HT120SS316
HT140SS316	110-140	$4\frac{3}{8}$ - $5\frac{1}{2}$	15.7	0.7	11.9	17.0	66.0	HT140SS316
HT160SS316	130-160	$5\frac{1}{8}$ - $6\frac{1}{4}$	15.7	0.7	11.9	17.0	66.0	HT160SS316
HT180SS316	150-180	$5\frac{7}{8}$ -7	15.7	0.7	11.9	17.0	30.0	HT180SS316
HT200SS316	170-200	$6\frac{3}{4}$ - $7\frac{7}{8}$	15.7	0.7	11.9	17.0	30.0	HT200SS316
HT220SS316	190-220	$7\frac{1}{2}$ - $8\frac{5}{8}$	15.7	0.7	11.9	17.0	30.0	HT220SS316
HT240SS316	210-240	$8\frac{1}{4}$ - $9\frac{1}{2}$	15.7	0.7	11.9	17.0	30.0	HT240SS316
HT260SS316	230-260	9- $10\frac{1}{4}$	15.7	0.7	11.9	17.0	30.0	HT260SS316
HT280SS316	250-280	$9\frac{7}{8}$ -11	15.7	0.7	11.9	17.0	30.0	HT280SS316
HT300SS316	270-300	$10\frac{5}{8}$ - $11\frac{3}{4}$	15.7	0.7	11.9	17.0	30.0	HT300SS316
HT320SS316	290-320	$11\frac{3}{8}$ - $12\frac{1}{2}$	15.7	0.7	11.9	17.0	30.0	HT320SS316
HT340SS316	310-340	$12\frac{1}{4}$ - $13\frac{3}{8}$	15.7	0.7	11.9	17.0	n/a	HT340SS316
HT360SS316	330-360	13- $14\frac{1}{8}$	15.7	0.7	11.9	17.0	n/a	HT360SS316
HT380SS316	350-380	$13\frac{3}{4}$ -15	15.7	0.7	11.9	17.0	n/a	HT380SS316
HT400SS316	370-400	$14\frac{1}{2}$ - $15\frac{3}{4}$	15.7	0.7	11.9	17.0	n/a	HT400SS316
HT420SS316	390-420	$15\frac{3}{8}$ - $16\frac{1}{2}$	15.7	0.7	11.9	17.0	n/a	HT420SS316
HT440SS316	410-440	$16\frac{1}{8}$ - $17\frac{1}{4}$	15.7	0.7	11.9	17.0	n/a	HT440SS316
HT460SS316	430-460	17- $18\frac{1}{8}$	15.7	0.7	11.9	17.0	n/a	HT460SS316
HT480SS316	450-480	$17\frac{3}{4}$ - $18\frac{7}{8}$	15.7	0.7	11.9	17.0	n/a	HT480SS316
HT500SS316	470-500	$18\frac{1}{2}$ - $19\frac{5}{8}$	15.7	0.7	11.9	17.0	n/a	HT500SS316
HT520SS316	490-520	$19\frac{5}{16}$ - $20\frac{1}{2}$	15.7	0.7	11.9	17.0	n/a	HT520SS316

## Quality Assurance



SAE J1508 Surface Vehicle Standards-Hose Clamp Specifications, Type HD is referenced in the quality control methods for the design/manufacture of the Jubilee High Torque Range of clips.

316 Stainless Steel

## Corrosion Resistance

2000 hours NSS Test

## Fastening

8mm A/F screw

## Industry Recommendations



# MULTIBAND

Multiband manufactured by Jubilee® is a self-assembly endless banding, or, screw band system, which allows the user to cut the band to the desired length.

Our Jubilee® Multiband system comprises of a worm drive steel strip that is cut to the length required, and screw housings which slide onto the band. A range of housing types are available for speed of assembly, security and ultimate strength. Multiband is useful in a range of applications including heating, ventilation and air conditioning (HVAC), sign fixing, conduit and cable retention and lagging. With material options for all environments.

- Cut to length
- Choice of housing types
- Wide range of material specifications



## Available In

Mild Steel Zinc Protected

304 Stainless Steel

316 Stainless Steel

# MULTIBAND

## Zinc Plated Mild Steel

### 11mm Wide



Adjustment mm	Band Width mm	Band Thickness mm	Recommended Torque Nm	Maximum Torque Nm	Maximum Pressure PSi
Cut to length	11.0	0.8	3.4	4.5	n/a



#### Banding In dlspensers of 10m

Part No. **MB1701**

- 11mm wide
- 10 metre roll



#### Banding In dlspensers of 30m

Part No. **MB1702**

- 11mm wide
- 30 metre roll



#### Housings/screws for use with 11mm Multiband

Part No. **MB1704**

- Solid housing
- 7mm A/F hexagonal screw
- Box of 25 sets



#### Captive housings/screws for use with 11mm Multiband

Part No. **MB1706**

- 7mm A/F hexagonal screw
- Box of 25 sets



#### Housings/Allen screws for use with 11mm Multiband

Part No. **MB1705**

- Solid housing
- 3/16" recess hexagonal key slot
- Box of 25 sets



#### Handy Pack

Part No. **MB1708**

- 11mm wide
- 10 metre roll
- 25 solid housings/screws



#### Pocket Pack

Part No. **MB1707**

- 11mm wide
- 3 metre roll
- 8 solid housings/screws

### Corrosion Resistance

240 hours NSS Test

### Fastening

7mm A/F screw

Zinc Plated Mild Steel

### Industry Recommendations

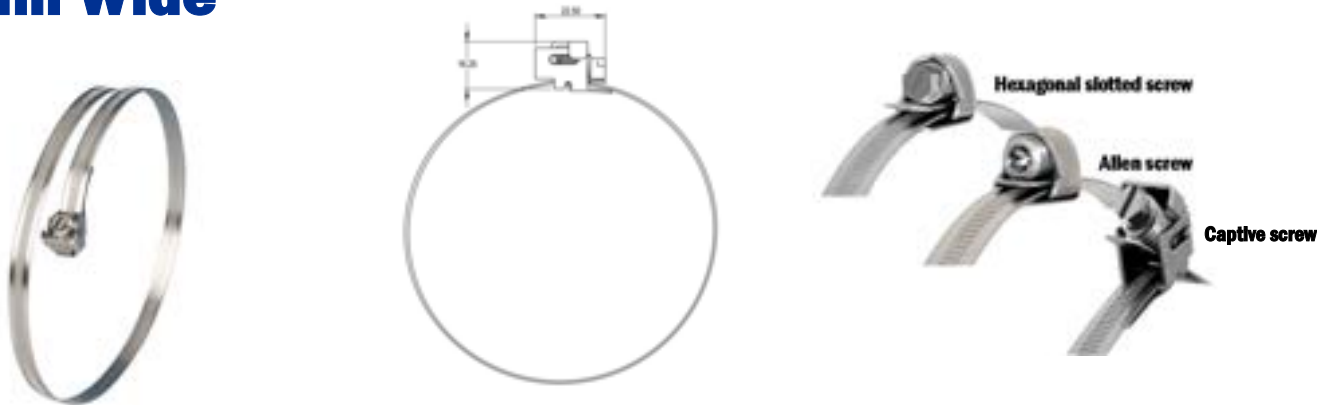




# MULTIBAND

## 304 Stainless Steel

### 11mm Wide



Adjustment mm	Band Width mm	Band Thickness mm	Recommended Torque Nm	Maximum Torque Nm	Maximum Pressure PSi
Cut to length	11.0	0.8	3.4	4.5	n/a



#### Banding In dispensers of 10m

- Part No. **MB1801**
- 11mm wide
  - 10 metre roll



#### Banding In dispensers of 30m

- Part No. **MB1802**
- 11mm wide
  - 30 metre roll



#### Handy Pack

- Part No. **MB1806**
- 11mm wide
  - 10 metre roll
  - 25 solid housings/screws



#### Housings/screws for use with 11mm Multiband

- Part No. **MB1803**
- Solid housing
  - 7mm A/F hexagonal screw
  - Box of 25 sets



#### Captive housings/screws for use with 11mm Multiband

- Part No. **MB1805**
- 7mm A/F hexagonal screw
  - Box of 25 sets



#### Housings/Allen screws for use with 11mm Multiband

- Part No. **MB1804**
- Solid housing
  - 3/16" recess hexagonal key slot
  - Box of 25 sets



#### Pocket Pack

- Part No. **MB1807**
- 11mm wide
  - 3 metre roll
  - 8 solid housings/screws

### Corrosion Resistance

1000 hours NSS Test

### Fastening

7mm A/F screw

304 Stainless Steel

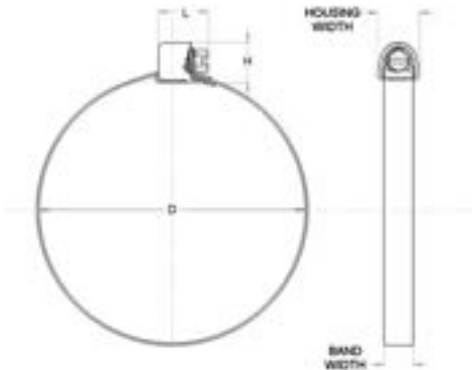
### Industry Recommendations



# MULTIBAND

## 316 Stainless Steel

### 11mm Wide



Adjustment mm	Band Width mm	Band Thickness mm	Recommended Torque Nm	Maximum Torque Nm	Maximum Pressure PSi
Cut to length	11.0	0.8	3.4	4.5	n/a



#### Banding In dispensers of 10m

Part No. **MB1901**

- 11mm wide
- 10 metre roll



#### Banding In dispensers of 30m

Part No. **MB1902**

- 11mm wide
- 30 metre roll



#### Housings/screws for use with 11mm Multiband

Part No. **MB1903**

- Solid housing
- 7mm A/F hexagonal screw
- Box of 25 sets



#### Handy Pack

Part No. **MB1906**

- 11mm wide
- 10 metre roll
- 25 solid housings/screws

## Corrosion Resistance

2000 hours NSS Test

## Fastening

7mm A/F screw

316 Stainless Steel

## Industry Recommendations

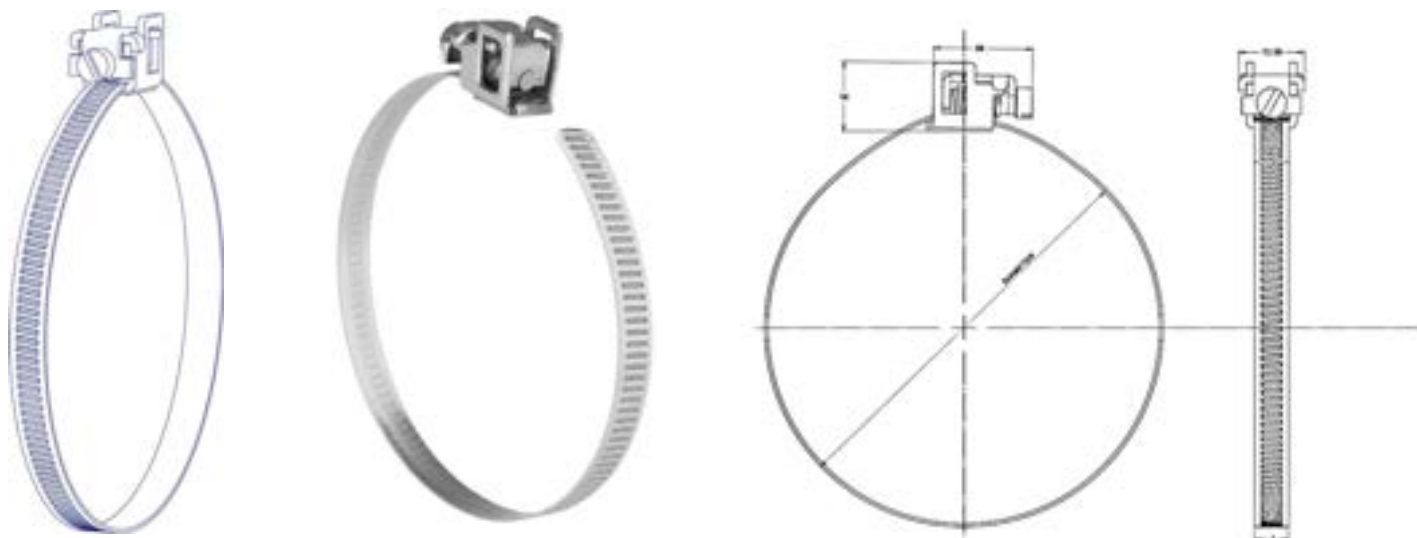




# MULTIBAND

## 304 Slimline Stainless Steel

### 7mm Wide



Adjustment mm	Band Width mm	Band Thickness mm	Recommended Torque Nm	Maximum Torque Nm	Maximum Pressure PSi
Cut to length	7.0	0.5	3.0	4.0	n/a

#### Banding In dispensers of 25m



Part No. **MB1601**

- 7mm wide
- 25 metre roll

#### Banding In dispensers of 50m



Part No. **MB1602**

- 7mm wide
- 50 metre roll

#### Flip/Lock housings/screws for use with 7mm Multiband



Part No. **MB1603**

- Round head slotted screw
- Box of 25 sets

#### Pocket Pack



Part No. **MB1607**

- 7mm wide
- 8 metre roll
- 10 flip/lock housings/screws

Flip/lock housing/screw



## Corrosion Resistance

1000 hours NSS Test

## Fastening

Round head slotted [flip/lock housing and screw]

## Industry Recommendations



**304 Stainless Steel**

# QUICK RELEASE STRAPS

Jubilee Quick Release Straps are used in a wide range of applications where a closed installation requires the clamp to be opened fully for positioning. Examples include sign fixing, cable retention, repairs and heating, ventilation and air conditioning. Jubilee Quick Release Straps are available in zinc protected mild steel and 304 stainless steel.

Jubilee Quick Release Straps are manufactured with a quick release swivel housing design which locks into position once the clip is fastened. The strong housing design ensures a higher maximum tightening torque than other quick release designs and the screw fitting requires no specialist tools to install, making installation quicker and more cost effective than some more complex solutions. The design also benefits from being reusable. Jubilee Quick Release Straps may also be used in cable retaining applications where nylon cable ties are not suitable due to fire regulations.

Jubilee Quick Release Straps have a very wide clamping range and excess band material can be removed at the point of installation. These clamps are flexible enough to conform to unusually shaped fittings and they are also suitable for very large diameter applications. Jubilee Quick Release Straps are available in 11mm band width in zinc protected mild steel and all parts 304 stainless steel. There is also a slimline 7mm band width version with flip/lock design which is available in all parts 304 stainless steel only and is suitable where space or weight are at a premium.



- 7mm hex head or slotted design
- Zinc protected mild steel or all 304 stainless steel
- 11mm or 7mm band width
- Made in UK



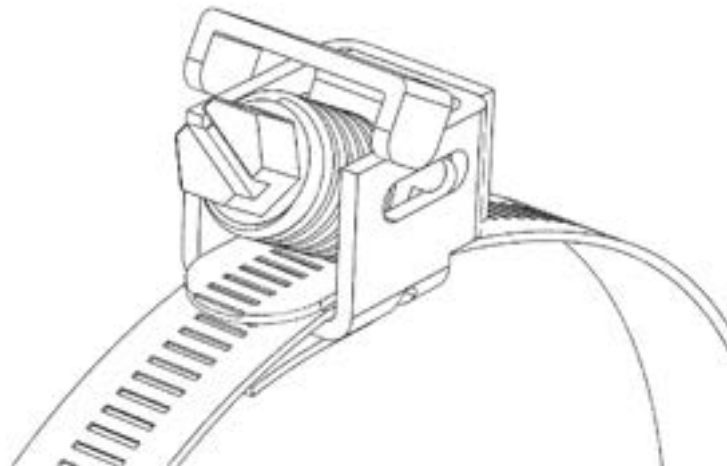
**Mild Steel Zinc Protected**

**304 Stainless Steel**

# QUICK RELEASE STRAPS

## Zinc Protected Mild Steel

### 11mm Wide



Part No.	Adjustment mm	Band Width mm	Band Thickness mm	Recommended Torque Nm	Maximum Torque Nm	Part No.
CAS050MS	35-50	11	0.8	3.4	4.5	CAS050MS
CAS075MS	45-75	11	0.8	3.4	4.5	CAS075MS
CAS100MS	50-100	11	0.8	3.4	4.5	CAS100MS
CAS120MS	50-120	11	0.8	3.4	4.5	CAS120MS
CAS150MS	50-150	11	0.8	3.4	4.5	CAS150MS
CAS175MS	50-175	11	0.8	3.4	4.5	CAS175MS
CAS200MS	50-200	11	0.8	3.4	4.5	CAS200MS
CAS225MS	50-225	11	0.8	3.4	4.5	CAS225MS
CAS250MS	50-250	11	0.8	3.4	4.5	CAS250MS
CAS275MS	50-275	11	0.8	3.4	4.5	CAS275MS
CAS300MS	50-300	11	0.8	3.4	4.5	CAS300MS
CAS330MS	50-330	11	0.8	3.4	4.5	CAS330MS
CAS355MS	50-355	11	0.8	3.4	4.5	CAS355MS
CAS380MS	50-380	11	0.8	3.4	4.5	CAS380MS
CAS405MS	50-405	11	0.8	3.4	4.5	CAS405MS
CAS455MS	50-455	11	0.8	3.4	4.5	CAS455MS
CAS505MS	50-505	11	0.8	3.4	4.5	CAS505MS
CAS555MS	50-555	11	0.8	3.4	4.5	CAS555MS
CAS605MS	50-605	11	0.8	3.4	4.5	CAS605MS
CAS710MS	50-710	11	0.8	3.4	4.5	CAS710MS
CAS810MS	50-810	11	0.8	3.4	4.5	CAS810MS
CAS910MS	50-910	11	0.8	3.4	4.5	CAS910MS
CAS965MS	50-965	11	0.8	3.4	4.5	CAS965MS

### Corrosion Resistance

240 hours NSS Test

### Fastening

7mm A/F (captive housing and screw)

### Industry Recommendations



Mild Steel Zinc Protected

# QUICK RELEASE STRAPS

## 304 Stainless Steel

### 11mm Wide



Part No.	Adjustment mm	Band Width mm	Band Thickness mm	Recommended Torque Nm	Maximum Torque Nm	Part No.
CAS050SS	35-50	11	0.8	3.4	4.5	CAS050SS
CAS075SS	45-75	11	0.8	3.4	4.5	CAS075SS
CAS100SS	50-100	11	0.8	3.4	4.5	CAS100SS
CAS120SS	50-120	11	0.8	3.4	4.5	CAS120SS
CAS150SS	50-150	11	0.8	3.4	4.5	CAS150SS
CAS175SS	50-175	11	0.8	3.4	4.5	CAS175SS
CAS200SS	50-200	11	0.8	3.4	4.5	CAS200SS
CAS225SS	50-225	11	0.8	3.4	4.5	CAS225SS
CAS250SS	50-250	11	0.8	3.4	4.5	CAS250SS
CAS275SS	50-275	11	0.8	3.4	4.5	CAS275SS
CAS300SS	50-300	11	0.8	3.4	4.5	CAS300SS
CAS330SS	50-330	11	0.8	3.4	4.5	CAS330SS
CAS355SS	50-355	11	0.8	3.4	4.5	CAS355SS
CAS380SS	50-380	11	0.8	3.4	4.5	CAS380SS
CAS405SS	50-405	11	0.8	3.4	4.5	CAS405SS
CAS455SS	50-455	11	0.8	3.4	4.5	CAS455SS
CAS505SS	50-505	11	0.8	3.4	4.5	CAS505SS
CAS555SS	50-555	11	0.8	3.4	4.5	CAS555SS
CAS605SS	50-605	11	0.8	3.4	4.5	CAS605SS
CAS710SS	50-710	11	0.8	3.4	4.5	CAS710SS
CAS810SS	50-810	11	0.8	3.4	4.5	CAS810SS
CAS910SS	50-910	11	0.8	3.4	4.5	CAS910SS
CAS965SS	50-965	11	0.8	3.4	4.5	CAS965SS

### Corrosion Resistance

1000 hours NSS Test

### Fastening

7mm A/F (captive housing and screw)

### Industry Recommendations

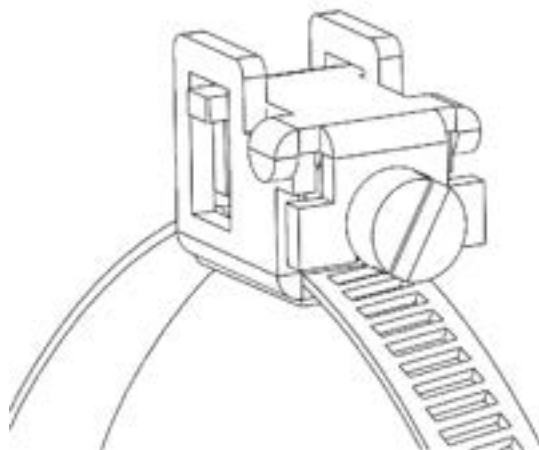


**304 Stainless Steel**

# QUICK RELEASE STRAPS

## 304 Stainless Steel

### 7mm Wide



Part No.	Adjustment mm	Band Width mm	Band Thickness mm	Recommended Torque Nm	Maximum Torque Nm	Part No.
FLS050SS	35-50	7	0.5	3.0	4.0	FLS050SS
FLS075SS	45-75	7	0.5	3.0	4.0	FLS075SS
FLS100SS	50-100	7	0.5	3.0	4.0	FLS100SS
FLS120SS	50-120	7	0.5	3.0	4.0	FLS120SS
FLS150SS	50-150	7	0.5	3.0	4.0	FLS150SS
FLS175SS	50-175	7	0.5	3.0	4.0	FLS175SS
FLS200SS	50-200	7	0.5	3.0	4.0	FLS200SS
FLS225SS	50-225	7	0.5	3.0	4.0	FLS225SS
FLS250SS	50-250	7	0.5	3.0	4.0	FLS225SS
FLS275SS	50-275	7	0.5	3.0	4.0	FLS275SS
FLS300SS	50-300	7	0.5	3.0	4.0	FLS300SS
FLS330SS	50-330	7	0.5	3.0	4.0	FLS330SS
FLS355SS	50-355	7	0.5	3.0	4.0	FLS355SS
FLS380SS	50-380	7	0.5	3.0	4.0	FLS380SS
FLS405SS	50-405	7	0.5	3.0	4.0	FLS405SS



### Corrosion Resistance

1000 hours NSS Test

### Fastening

Round head slotted [flip/lock housing and screw]

### Industry Recommendations



304 Stainless Steel



# FLEXIBAND

Our band and buckle system, Jubilee Flexiband, is low profile, tamper-proof and extremely strong.

Commonly used in municipal applications such as sign fixing where the tamper proof nature of the product is of paramount importance. The high clamping force and low profile fastening also make Flexiband the optimal solution for many delivery hose applications.

All components are manufactured in corrosion resistant 304 grade stainless steel.



The low profile of the buckle is useful where space is a consideration, or, where there is a snagging hazard. For high volume users Flexiband also offers an economical alternative as the cost of the tool is spread over many fittings.

High resistance to corrosion means that Jubilee Flexiband is suited to a wide range of industries, including industrial, agriculture, automotive, civil engineering, marine, food, petrochemicals, road signs and offshore oil and gas.

Flexiband is suitable for virtually any diameter and shape and if needed, can be double banded for extra strength.

## Flexiband Operating Tool

For tensioning and cutting

Part No. FBT



**304 Stainless Steel**



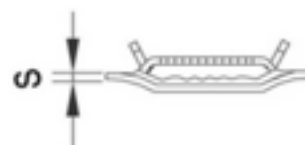
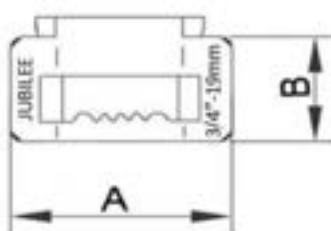
# FLEXIBAND 304 Stainless Steel

## Banding



Part No.	Description	A Width mm	A Width Inches	S Band Thickness mm	Tensile Strength N/mm <sup>2</sup>	Part No.
FB09B	Banding in dispensers of 30 metres	9	$\frac{3}{8}$	0.65	540-750	FB09B
FB13B	Banding in dispensers of 30 metres	13	$\frac{1}{2}$	0.75	540-750	FB13B
FB16B	Banding in dispensers of 30 metres	16	$\frac{5}{8}$	0.75	540-750	FB16B
FB19B	Banding in dispensers of 30 metres	19	$\frac{3}{4}$	0.75	540-750	FB19B

## Buckles



Part No.	Description	Width mm	Width Inches	Dimensions		
				A = mm	B = mm	S = mm
FB09H	Buckles in boxes containing 25	9	$\frac{3}{8}$	23	16	1.2
FB13H	Buckles in boxes containing 25	13	$\frac{1}{2}$	35	27	1.4
FB16H	Buckles in boxes containing 25	16	$\frac{5}{8}$	38	27	1.4
FB19H	Buckles in boxes containing 25	19	$\frac{3}{4}$	42	27	1.6

## Quality Assurance



SAE J1508 Surface Vehicle Standards-Hose Clamp Specifications, type H, style C is referenced in the quality control methods for the design/manufacture of Jubilee Flexiband.

## Corrosion Resistance

1000 hours NSS Test

## Fastening

Bend arms on buckle and tension band using Jubilee Flexiband tool.

## Industry Recommendations



304 Stainless Steel

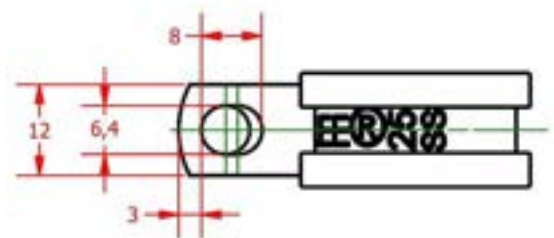
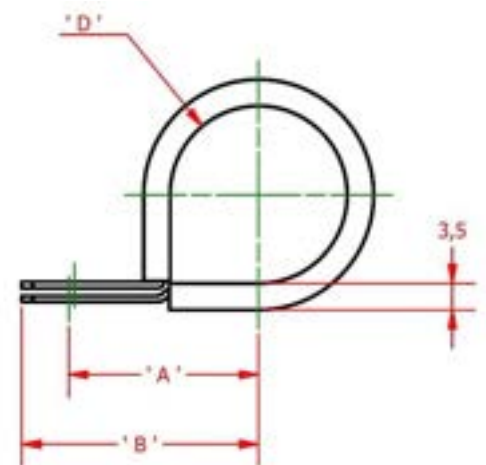
# P CLIPS

Jubilee® P Clips are suitable for retaining pipes, cables and hoses.

Jubilee® P Clips are manufactured from a flexible mild or stainless steel one piece band with an ethylene-propylene-diene monomer (EPDM) rubber liner. The band features a stepped design to allow the clip to sit flush with the rubber liner once in situ. The single piece construction means that there are no joins which makes the clip very strong. The upper hole has an elongated design allowing easy fitting of the clip. The rubber liner is manufactured in a corresponding profile to be secure in its position on the clip and ensures a tight fit as well as vibration damping and sound insulation. EPDM rubber offers several advantages over alternatives such as a wide operating temperature range, resistance to UV (ultra violet) weathering and resistance to creep.



- Operating temperature range -50°C to 150°C
- Good UV weathering resistance
- Offers good resistance to creep
- Delivers good abrasion resistance
- Advanced resistance to ozone
- Highly developed resistance to ageing
- Halogen free
- Pressed step sits flush with liner



**Available In:-**

**Mild Steel Zinc Plated**

**304 Stainless Steel**

**316 Stainless Steel**

# P CLIPS

## Mild Steel Zinc Plated



Part No.	Diameter mm	Band Width mm	Fastening	Part No.
JPC005MS	5	12	M6	JPC005MS
JPC006MS	6	12	M6	JPC006MS
JPC008MS	8	12	M6	JPC008MS
JPC009MS	9	12	M6	JPC009MS
JPC010MS	10	12	M6	JPC010MS
JPC012MS	12	12	M6	JPC012MS
JPC013MS	13	12	M6	JPC013MS
JPC014MS	14	12	M6	JPC014MS
JPC015MS	15	12	M6	JPC015MS
JPC016MS	16	12	M6	JPC016MS
JPC017MS	17	12	M6	JPC017MS
JPC018MS	18	12	M6	JPC018MS
JPC019MS	19	12	M6	JPC019MS
JPC020MS	20	12	M6	JPC020MS
JPC021MS	21	12	M6	JPC021MS
JPC022MS	22	12	M6	JPC022MS
JPC025MS	25	12	M6	JPC025MS
JPC027MS	27	12	M6	JPC027MS
JPC028MS	28	12	M6	JPC028MS
JPC029MS	29	12	M6	JPC029MS
JPC030MS	30	12	M6	JPC030MS
JPC032MS	32	12	M6	JPC032MS
JPC035MS	35	12	M6	JPC035MS
JPC040MS	40	12	M6	JPC040MS
JPC044MS	44	12	M6	JPC044MS
JPC048MS	48	12	M6	JPC048MS
JPC052MS	52	12	M6	JPC052MS

### Quality Assurance



### Corrosion Resistance

72 hours NSS Test

### Fastening

M6

### Industry Recommendations



Mild Steel Zinc Plated

# P CLIPS

## 304 Stainless Steel



Part No.	Diameter mm	Band Width mm	Fastening	Part No.
JPC005SS	5	12	M6	JPC005SS
JPC006SS	6	12	M6	JPC006SS
JPC008SS	8	12	M6	JPC008SS
JPC009SS	9	12	M6	JPC009SS
JPC010SS	10	12	M6	JPC010SS
JPC012SS	12	12	M6	JPC012SS
JPC013SS	13	12	M6	JPC013SS
JPC014SS	14	12	M6	JPC014SS
JPC015SS	15	12	M6	JPC015SS
JPC016SS	16	12	M6	JPC016SS
JPC017SS	17	12	M6	JPC017SS
JPC018SS	18	12	M6	JPC018SS
JPC019SS	19	12	M6	JPC019SS
JPC020SS	20	12	M6	JPC020SS
JPC021SS	21	12	M6	JPC021SS
JPC022SS	22	12	M6	JPC022SS
JPC025SS	25	12	M6	JPC025SS
JPC027SS	27	12	M6	JPC027SS
JPC028SS	28	12	M6	JPC028SS
JPC029SS	29	12	M6	JPC029SS
JPC030SS	30	12	M6	JPC030SS
JPC032SS	32	12	M6	JPC032SS
JPC035SS	35	12	M6	JPC035SS
JPC040SS	40	12	M6	JPC040SS
JPC044SS	44	12	M6	JPC044SS
JPC048SS	48	12	M6	JPC048SS
JPC052SS	52	12	M6	JPC052SS
JPC060SS	60	12	M6	JPC060SS

### Quality Assurance



### Corrosion Resistance

1000 hours NSS Test

### Fastening

M6

### Industry Recommendations



304 Stainless Steel

# P CLIPS

## 316 Stainless Steel



Part No.	Diameter mm	Band Width mm	Fastening	Part No.
JPC005SS316	5	12	M6	JPC005SS316
JPC006SS316	6	12	M6	JPC006SS316
JPC008SS316	8	12	M6	JPC008SS316
JPC009SS316	9	12	M6	JPC009SS316
JPC010SS316	10	12	M6	JPC010SS316
JPC012SS316	12	12	M6	JPC012SS316
JPC013SS316	13	12	M6	JPC013SS316
JPC014SS316	14	12	M6	JPC014SS316
JPC015SS316	15	12	M6	JPC015SS316
JPC016SS316	16	12	M6	JPC016SS316
JPC017SS316	17	12	M6	JPC017SS316
JPC018SS316	18	12	M6	JPC018SS316
JPC019SS316	19	12	M6	JPC019SS316
JPC020SS316	20	12	M6	JPC020SS316
JPC021SS316	21	12	M6	JPC021SS316
JPC022SS316	22	12	M6	JPC022SS316
JPC025SS316	25	12	M6	JPC025SS316
JPC027SS316	27	12	M6	JPC027SS316
JPC028SS316	28	12	M6	JPC028SS316
JPC029SS316	29	12	M6	JPC029SS316
JPC030SS316	30	12	M6	JPC030SS316
JPC032SS316	32	12	M6	JPC032SS316
JPC035SS316	35	12	M6	JPC035SS316
JPC040SS316	40	12	M6	JPC040SS316
JPC044SS316	44	12	M6	JPC044SS316
JPC048SS316	48	12	M6	JPC048SS316
JPC052SS316	52	12	M6	JPC052SS316

### Quality Assurance



### Corrosion Resistance

1000 hours NSS Test

### Fastening

M6

### Industry Recommendations



316 Stainless Steel



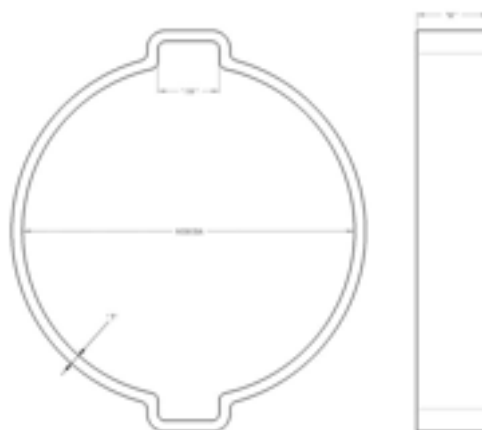
# O CLIPS

Jubilee O Clip, 2-Ear, clamps are widely used for maintenance and OEM applications. Commonly fitted on air, fluid, gas and steam lines and also suitable for low pressure hydraulic applications.

The absence of a screw mechanism allows Jubilee® O Clips to be useful on extremely small hoses. The tamper proof nature of the fitting may also make Jubilee® O Clips suitable for certain applications where there may be a risk associated with any interference to the fitting. Sometimes referred to as Lemon Clips due to their shape and also referred to as double ear clips and 2-ear clips.

Pincers are used to crimp the ears of the clamps and effect a proper seal.

2-ear clamps are best installed by closing one ear fully first, the second ear is then closed so that the first ear opens slightly (gap to be approximately 1.5mm). This builds a resilient strength into the clamp in a spring-like action to hold against pressure, vibration and hose shrinkage due to temperature changes or ageing.



**Available in:-**

**Mild Steel Zinc Plated**

**304 Stainless Steel**



# O CLIPS

## Mild Steel Zinc Plated:-

Part No.	Adjustment mm	Band Width mm	Band Thickness mm	Maximum Pressure PSI	Part No.
OC0507MS	5-7	6.0	0.6	200	OC0507MS
OC0709MS	7-9	6.0	0.8	200	OC0709MS
OC0911MS	9-11	6.5	0.8	200	OC0911MS
OC1113MS	11-13	6.5	0.9	200	OC1113MS
OC1315MS	13-15	7.0	1.0	200	OC1315MS
OC1417MS	14-17	7.0	1.1	200	OC1417MS
OC1518MS	15-18	7.5	1.1	200	OC1518MS
OC1720MS	17-20	7.5	1.1	200	OC1720MS
OC1821MS	18-21	8.0	1.1	180	OC1821MS
OC2023MS	20-23	8.0	1.1	180	OC2023MS
OC2225MS	22-25	8.5	1.3	180	OC2225MS
OC2327MS	23-27	8.5	1.3	180	OC2327MS
OC2528MS	25-28	9.0	1.3	180	OC2528MS
OC2831MS	28-31	9.0	1.3	180	OC2831MS
OC3134MS	31-34	9.5	1.3	75	OC3134MS
OC3437MS	34-37	9.5	1.5	75	OC3437MS
OC3740MS	37-40	10.0	1.5	75	OC3740MS
OC4043MS	40-43	10.0	1.5	75	OC4043MS
OC4346MS	43-46	10.5	1.5	75	OC4346MS

### Quality Assurance:



SAE J1508 Surface Vehicle Standards-Hose Clamp Specifications, Type TE is referenced in the quality control methods for the design/manufacture of the Jubilee O Clips Range.

Mild Steel Zinc Plated

### Corrosion Resistance:

144 hours NSS Test

### Fastening:

Pinch using Jubilee Side Closing Pincer tool P1099

### Industry Recommendations:-



# O CLIPS

## 304 Stainless Steel:-

Part No.	Adjustment mm	Band Width mm	Band Thickness mm	Maximum Pressure PSI	Part No.
OC0305SS	3-5	5.0	0.7	200	OC0305SS
OC0507SS	5-7	6.0	0.6	200	OC0507SS
OC0709SS	7-9	6.0	0.8	200	OC0709SS
OC0911SS	9-11	6.5	0.8	200	OC0911SS
OC1113SS	11-13	6.5	0.8	200	OC1113SS
OC1315SS	13-15	7.0	1.0	200	OC1315SS
OC1417SS	14-17	7.0	1.0	200	OC1417SS
OC1518SS	15-18	7.5	1.0	200	OC1518SS
OC1720SS	17-20	7.5	1.0	200	OC1720SS
OC1821SS	18-21	8.0	1.0	180	OC1821SS
OC2023SS	20-23	8.0	1.0	180	OC2023SS
OC2225SS	22-25	8.5	1.2	180	OC2225SS

### Quality Assurance:



SAE J1508 Surface Vehicle Standards-Hose Clamp Specifications, Type TE is referenced in the quality control methods for the design/manufacture of the Jubilee O Clips Range.

304 Stainless Steel

### Corrosion Resistance:

1000 hours NSS Test

### Fastening:

Pinch using Jubilee Side Closing Pincer tool P1099

### Industry Recommendations:-



# LIGHT RANGE

With a narrower band than our Original Jubilee® Clip, this lightweight clip is designed to offer an excellent seal in a confined space. We manufacture Jubilee® Light Range clips to DIN 3017 and like the Original Jubilee® Clip, all clips are continuously threaded to enable extra flexibility when adjusting the clips to the required size. This clip is most suited to applications where space or weight is restricted and often used in car and light commercial vehicle applications.



Jubilee® Light Range clips meet the high standard of quality and performance required of all Jubilee® products. The benefits of weight saving and extra corrosion resistance allow this addition to the full range of Jubilee clips to offer the customer a greater flexibility in meeting their own requirements.

Our Jubilee® Light Range in zinc protected mild steel was originally designed specifically for use in the automotive industry and the automotive aftermarket to comply with DIN 3017, but are also suited for other applications where space, or weight, is restricted in e.g. agricultural applications, the industrial sector and hardware/DIY applications.

Jubilee® Light Range hose clips in 304 (18/8) stainless steel are used in the marine, oil and gas and food sectors, as well as other corrosive environments where higher corrosion resistance is required, but space and/or weight are at a premium.



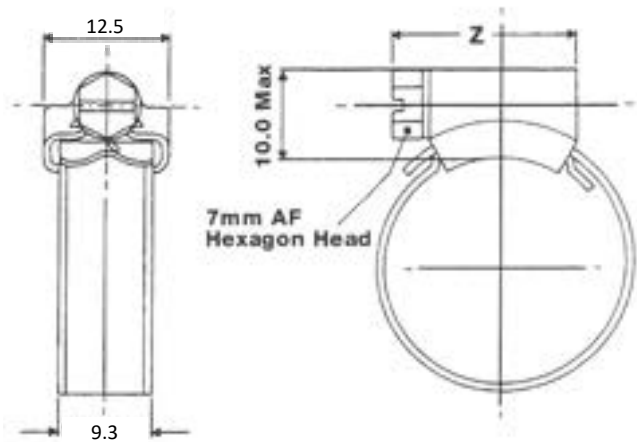
Available in

Mild Steel Zinc Protected

304 Stainless Steel

# LIGHT RANGE

## Mild Steel Zinc Protected



Part No.	Adjustment mm	Band Width mm	Band Thickness mm	Recommended Torque Nm	Maximum Torque Nm	Maximum Pressure PSI	Part No.
000MS	9.5-12	9.3	0.7	3.4	4.5	203	000MS
M00MS	11-16	9.3	0.7	3.4	4.5	203	M00MS
00MS	13-20	9.3	0.7	3.4	4.5	203	00MS
LR022MS	12-22	9.3	0.7	3.4	4.5	182	LR022MS
LR027MS	16-27	9.3	0.7	3.4	4.5	182	LR027MS
LR032MS	20-32	9.3	0.7	3.4	4.5	92	LR032MS
LR040MS	25-40	9.3	0.7	4.5	6.0	92	LR040MS
LR045MS	30-45	9.3	0.7	4.5	6.0	92	LR045MS
LR050MS	32-50	9.3	0.7	4.5	6.0	92	LR050MS
LR060MS	40-60	9.3	0.7	4.5	6.0	92	LR060MS
LR070MS	50-70	9.3	0.7	4.5	6.0	92	LR070MS
LR080MS	60-80	9.3	0.7	4.5	6.0	39	LR080MS
LR090MS	70-90	9.3	0.7	4.5	6.0	39	LR090MS
LR100MS	80-100	9.3	0.7	4.5	6.0	39	LR100MS
LR110MS	90-110	9.3	0.7	4.5	6.0	39	LR110MS
LR120MS	100-120	9.3	0.7	4.5	6.0	39	LR120MS
LR130MS	110-130	9.3	0.7	4.5	6.0	39	LR130MS
LR140MS	120-140	9.3	0.7	4.5	6.0	39	LR140MS
LR150MS	130-150	9.3	0.7	4.5	6.0	17	LR150MS
LR160MS	140-160	9.3	0.7	4.5	6.0	17	LR160MS

### Quality Assurance



SAE J1508 Surface Vehicle Standards-Hose Clamp Specifications, Type FE is referenced in the quality control methods for the design/manufacture of Lightweight Range Jubilee Clips.

### Corrosion Resistance

240 hours NSS Test

### Fastening

7mm A/F screw

### Industry Recommendations



Mild Steel Zinc Protected

# LIGHT RANGE

## 304 Stainless Steel



Part No.	Adjustment mm	Band Width mm	Band Thickness mm	Recommended Torque Nm	Maximum Torque Nm	Maximum Pressure PSI	Part No.
000SS	9.5-12	9.3	0.7	3.4	4.5	203	000SS
M00SS	11-16	9.3	0.7	3.4	4.5	203	M00SS
O0SS	13-20	9.3	0.7	3.4	4.5	203	O0SS
LR022SS	12-22	9.3	0.7	3.4	4.5	182	LR022SS
LR027SS	16-27	9.3	0.7	3.4	4.5	182	LR027SS
LR032SS	20-32	9.3	0.7	3.4	4.5	92	LR032SS
LR040SS	25-40	9.3	0.7	4.5	6.0	92	LR040SS
LR045SS	30-45	9.3	0.7	4.5	6.0	92	LR045SS
LR050SS	32-50	9.3	0.7	4.5	6.0	92	LR050SS
LR060SS	40-60	9.3	0.7	4.5	6.0	92	LR060SS
LR070SS	50-70	9.3	0.7	4.5	6.0	92	LR070SS
LR080SS	60-80	9.3	0.7	4.5	6.0	39	LR080SS
LR090SS	70-90	9.3	0.7	4.5	6.0	39	LR090SS
LR100SS	80-100	9.3	0.7	4.5	6.0	39	LR100SS
LR110SS	90-110	9.3	0.7	4.5	6.0	39	LR110SS
LR120SS	100-120	9.3	0.7	4.5	6.0	39	LR120SS
LR130SS	110-130	9.3	0.7	4.5	6.0	39	LR130SS
LR140SS	120-140	9.3	0.7	4.5	6.0	39	LR140SS
LR150SS	130-150	9.3	0.7	4.5	6.0	17	LR150SS
LR160SS	140-160	9.3	0.7	4.5	6.0	17	LR160SS

### Quality Assurance



SAE J1508 Surface Vehicle Standards-Hose Clamp Specifications, Type FE is referenced in the quality control methods for the design/manufacture of Lightweight Range Jubilee Clips.

### Corrosion Resistance

1000 hours NSS Test

### Fastening

7mm A/F screw

### Industry Recommendations

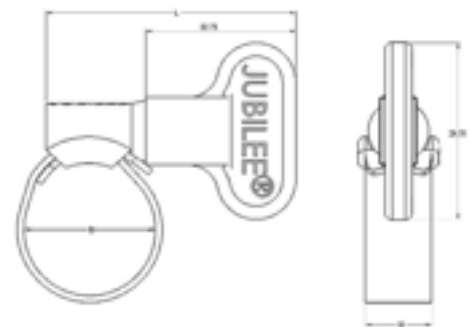


**304 Stainless Steel**

# WINGSPADE

For easy hand fitting our Jubilee® Wingspade clips are supplied with a thumb screw, allowing easy torquing using just a thumb and forefinger. Suitable for applications where there is a requirement for frequent tightening/ loosening, low torque, or domestic applications.

The product range meets DIN 3017.



Part No.	Adjustment mm	Band Width mm	Band Thickness mm	Recommended Torque Nm	Maximum Torque Nm	Maximum Pressure PSI	Part No.
WS012MS	9.5-12	9.3	0.7	3.4	4.5	182	WS012MS
WS016MS	11-16	9.3	0.7	3.4	4.5	182	WS016MS
WS020MS	13-20	9.3	0.7	3.4	4.5	182	WS020MS
WS022MS	12-22	9.3	0.7	3.4	4.5	182	WS022MS
WS027MS	16-27	9.3	0.7	3.4	4.5	182	WS027MS
WS032MS	20-32	9.3	0.7	3.4	4.5	92	WS032MS
WS040MS	25-40	9.3	0.7	4.5	6.0	92	WS040MS
WS045MS	30-45	9.3	0.7	4.5	6.0	92	WS045MS
WS050MS	32-50	9.3	0.7	4.5	6.0	92	WS050MS
WS060MS	40-60	9.3	0.7	4.5	6.0	92	WS060MS
WS070MS	50-70	9.3	0.7	4.5	6.0	92	WS070MS



Mild Steel Zinc Protected

**Corrosion Resistance**  
240 hours NSS Test

**Fastening**  
Wing screw

**Industry Recommendations**





# CV BOOT CLIP



Constant Velocity Boot Clips secure the rubber bellows to the CV joint and help protect it from dirt and water as well as preventing lubricants from leaking.

Supplied as a flat strap, Jubilee CV Boot Clips can be easily installed by interlocking the clip hooks on the outside of the band and crimping the ear to secure. The clip must be shaped prior to assembly.

Both clip sizes have a range of engagement positions to easily adjust to different diameters.



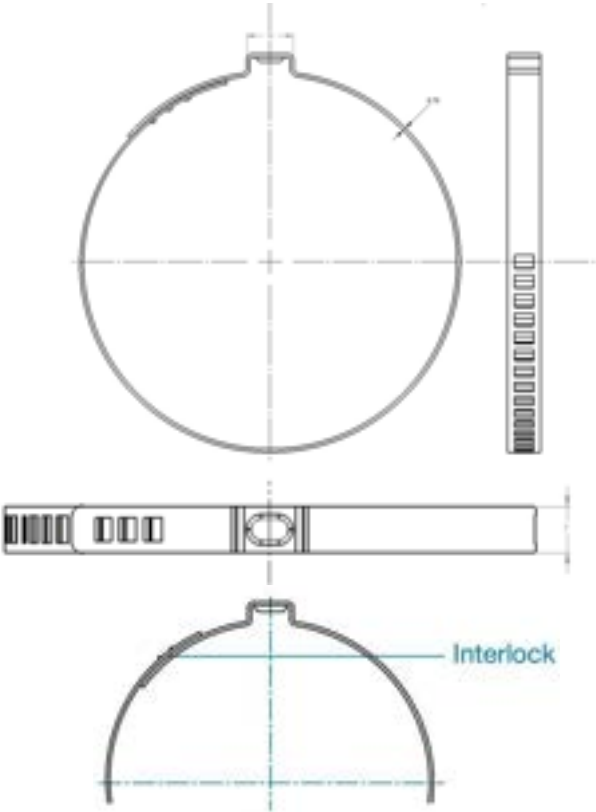
Part No.	Adjustment mm	Band Width mm	Band Thickness mm	Part No.
CVC050SS	25-50mm	7.0	0.8	CVC050SS
CVC110SS	40-110mm	7.0	0.8	CVC110SS
CVK015SS	Kit – see below for contents	7.0	0.8	CVK015SS



### CV Boot Clip Kit

Part No. **CVK015SS**

- 5 of size 25-50mm
- 10 of size 40-110mm
- 304 Stainless steel



### Corrosion Resistance

1000 hours NSS Test

### Fastening

Pinch using Jubilee Side Closing Pincer tool P1099

### Industry Recommendations

Available in

304 Stainless Steel



# PACKS AND DISPENSERS

Increase your sales of Jubilee® clips with our point of sale dispensers. They provide eye-catching countertop and wall mounted functional displays for trade counters, additionally they hold a small stock of Jubilee® products in one convenient place ensuring every opportunity is taken to make a sale.

## Jubilee® Clip Dispenser

The Jubilee® Clip Dispenser comes with 100 Jubilee® Clips, ten each of the most popular ten sizes of clip covering an adjustment range from 9.5mm up to 50mm and also includes three Jubilee Flexidriver® tools.

**Contents:** 10 of each Jubilee® Clip sizes 000, M00, 00, 0, 0X, 1A, 1, 1X, 1M & 2A **plus** 3 Jubilee Flexidrivers®

**Weight:** 3.88 kg

**Dimensions:** 340 (H) x 330 (W) x 180 (D) mm

**Part No:**

**Material:** Mild Steel Zinc Protected

**CD100MS**

**Part No:**

**Material:** 304 Stainless Steel

**CD100SS**

**Part No:**

**Material:** 316 Stainless Steel

**CD100SS316**



## Jubilee® Large Clip Dispenser

The Jubilee® Large Clip Dispenser contains 140 assorted Jubilee clips together with three Jubilee Flexidriver® tools all displayed on wire hooks which are easy to re-stock. This provides an aesthetically pleasing point of sale display and a small stock holding in one single unit.

**Contents:** 10 of each Jubilee® Clip sizes 000, M00, 00, 0, 0X, 1A, 1, 1X, 1M, 2A, 2, 2X, 3 & 3X **plus** 3 Jubilee Flexidrivers®

**Weight:** 5.82 kg

**Dimensions:** 510 (H) x 410 (W) x 190 (D) mm

**Part No:**

**Material:** Mild Steel Zinc Protected

**CD140MS**

**Part No:**

**Material:** 304 Stainless Steel

**CD140SS**

**Part No:**

**Material:** 316 Stainless Steel

**CD140SS316**



## Jubilee® Mega Dispenser

The Mega Dispenser is adaptable and user friendly, it is a great sales aid for any trade counter and keeps stock visible and tidy. It dispenses Jubilee clips in boxes of ten (92 boxes in total) and also carries five of the essential Flexidriver tools for easy adjustment of Jubilee clips.

**Contents:** 100 of 000, M00, 00 ; 80 of 0, 0X ; 70 of 1A ; 60 of 1, 1X, 1M, 2A ; 50 of 2, 2X, 3 **plus** 5 Jubilee Flexidrivers®

**Weight:** 32 kg

**Dimensions:** 480 (H) x 600 (W) x 290 (D) mm

**Part No:**

**Material:** Mild Steel Zinc Protected

**MD920MS**

**Part No:**

**Material:** 304 Stainless Steel

**MD920SS**

**Part No:**

**Material:** 316 Stainless Steel

**MD920SS316**



## Jubilee® Handy Pack

The Jubilee® Handy Pack includes 100 clips with ten each of the ten most popular sizes, facilitating connections from 9.5mm up to 50mm. The robust and smart cardboard outer is suitable for an end user or as a point of sale.

**Contents:** 10 of each Jubilee® Clip sizes 000, M00, 00, 0, 0X, 1A, 1, 1X, 1M & 2A

**Weight:** 2.75 kg

**Dimensions:** 80 (H) x 290 (W) x 250 (D) mm (Height is 210mm when open in folded position)

**Part No:**

**Material:** Mild Steel Zinc Protected

**HP100MS**

**Part No:**

**Material:** 304 Stainless Steel

**HP100SS**

**Part No:**

**Material:** 316 Stainless Steel

**HP100SS316**



# PACKS AND DISPENSERS

Jubilee® offers a variety of assorted packs covering the most popular ranges making it possible to keep a selection of clips appropriate to any situation to hand in one convenient pack. All containers are divided into sections and have a transparent lid that is clearly labelled for easy identification of parts making them all very user friendly. The containers are also extremely versatile and sturdy making them re-usable and tough for most environments.

## Jubilee® Workshop Pack

The Jubilee® Workshop Pack contains 143 of the most popular Jubilee® Original Range clips to suit applications from 9.5mm to 40mm in a sturdy plastic container suitable for any tough industrial environment.

**Contents:** 24 of 000 | 32 of M00 | 28 of 00 | 13 of 0, 1 | 14 of 0X | 12 of 1A | 7 of 1X

**Weight** 3.6 kg

**Dimensions** 55 (H) x 330 (W) x 250 (D) mm

### Part No

**Material** Mild Steel Zinc Protected

**HCP143MS**

### Part No

**Material** 304 Stainless Steel

**HCP143SS**

### Part No

**Material** 316 Stainless Steel

**HCP143SS316**



## Jubilee® Junior Assortment

Assortment of 165 Jubilee® Junior (nut and bolt) clips suitable for small bore hoses and connecting hoses in low pressure applications from 7mm to 14mm.

**Contents:** 25 of NB0709, NB0810, NB0911 | 30 of NB1012, NB1113, NB1214

**Weight** 1.35 kg

**Dimensions** 40 (H) x 270 (W) x 175 (D) mm

### Part No

**Material** Mild Steel Zinc Plated

**JA165MS**

### Part No

**Material** 304 Stainless Steel

**JA165SS**



## Jubilee® 'O' Clip Kit

Jubilee® 'O' clip kits come complete with 175 assorted 'O' clips (double ear clips) from 5mm to 20mm and are available with or without a pincer tool for securing the clips.

**Contents:** 20 of OC0507, OC0911, OC1113, OC1417, OC1518, OC1720 | 25 of OC0709 | 30 of OC1315

**Weight** 1.20 kg with pincer

0.85 kg without pincer

**Dimensions** 40 (H) x 270 (W) x 175 (D) mm

### Part No

**OKP175MS**

with Pincer

### Part No

**OKP175SS**

with Pincer

**OK175MS**

without Pincer

**OK175SS**

without Pincer

### Material

Mild Steel Zinc Plated

### Material

304 Stainless Steel



## Jubilee® P Clip Kit

This kit contains 110 pieces of Jubilee P clips in the most popular and versatile sizes from 5mm to 35mm. P clips are manufactured from one piece of steel band with an EPDM rubber liner.

**Contents:** 14 of JPC005, JPC006 | 12 of JPC008, JPC029 | 10 of JPC010 | 8 of JPC013, JPC016, JPC019, JPC021, JPC025, JPC035

**Weight** 1.62 kg

**Dimensions** 55 (H) x 330 (W) x 250 (D) mm

### Part No

**Material** Mild Steel Zinc Plated

**JPC110MS**

### Part No

**Material** 304 Stainless Steel

**JPC110SS**



# PACKS AND DISPENSERS

## Jubilee® Original Pocket Pack

This convenient small pack contains 32 Jubilee® Original Range clips with recommended adjustment ranges from 9.5mm to 40mm.

**Contents:** 6 of 000, M00, 00 ; 4 of 0, 0X ; 2 of 1A, 1, 1X

**Weight** 0.61 kg  
**Dimensions** 39 (H) x 180 (W) x 150 (D) mm

<b>Part No</b>	<b>PPMS</b>	<b>Part No</b>	<b>PPSS</b>	<b>Part No</b>	<b>PPSS316</b>
<b>Material</b>	Mild Steel Zinc Protected	<b>Material</b>	304 Stainless Steel	<b>Material</b>	316 Stainless Steel



## Jubilee® Junior Pocket Pack

This useful compact pack contains 54 Jubilee Junior clips to suit low pressure fittings from 7mm to 16mm.

**Contents:** 6 of NB0709, NB0810, NB0911, NB1315 ; 8 of NB1012, NB1214 ; 10 of NB1113 ; 4 of NB1416

**Weight** 0.44 kg  
**Dimensions** 39 (H) x 180 (W) x 150 (D) mm

<b>Part No</b>	<b>PPIJMS</b>	<b>Part No</b>	<b>PPIJSS</b>
<b>Material</b>	Mild Steel Zinc Plated	<b>Material</b>	304 Stainless Steel



## Jubilee® Wingspade Pocket Pack

The apposite Jubilee Wingspade® pocket pack contains 22 clips each with a wing screw for easy fitting without the need for any tools, covering fittings from 9.5mm to 50mm.

**Contents:** 4 of WS012, WS016, WS020, WS027 ; 2 of WS032, WS045, WS050

**Weight** 0.47 kg  
**Dimensions** 39 (H) x 180 (W) x 150 (D) mm

<b>Part No</b>	<b>PPWS</b>
<b>Material</b>	Mild Steel Zinc Protected with plastic spade



## Jubilee® Multiband Handy Pack

The Multiband self-assembly, cut to size banding and housing/screw system is available in a useful Handy Pack. Particularly suitable when you don't have the correct size clip to hand.

**Contents:** 10 metres of band with 25 housings/screws.

**NB** Other pack option available – Pocket Pack.

**Weight** 1.15 kg  
**Dimensions** 156 (H) x 156 (W) x 35 (D) mm

<b>Part No</b>	<b>MB1708</b>	<b>Part No</b>	<b>MB1806</b>	<b>Part No</b>	<b>MB1906</b>
<b>Material</b>	Mild Steel Zinc Protected	<b>Material</b>	304 Stainless Steel	<b>Material</b>	316 Stainless Steel



# TOOLS

This carefully selected range of tools is perfectly suited to the Jubilee range of products and ensures that Jubilee® Clips are easy to apply and adjust to their optimum torque.

## Jubilee® Flexidriver

The flexible shaft of the Jubilee® Flexidriver allows the adjustment of our clips even in difficult to reach positions. The socket is suitable to fit any 7mm across flat hexagonal headed screw.

**Weight** 0.13 kg

**Dimensions** 260 (L) x 30 (W) x 30 (D) mm

**Part No** **FLX**

**Material** Mild Steel



## Jubilee® Clipdriver

The rigid shaft Jubilee® Clipdriver for easy adjustment of Jubilee clips. Available in 95mm length with a 7mm socket.

**Weight** 0.08 kg

**Dimensions** 95 (L) x 80 (W) x 12 (D) mm

**Part No** **CDR95**

**Material** Mild Steel



## Side Closing Pincer

Side closing pincer for crimping the ears of Jubilee® 'O' Clips and Jubilee® constant velocity (CV) boot clips. Can be used end or side closing and where access to the ear is difficult.

**Weight** 0.35 kg

**Dimensions** 225 (L) x 40 (W) x 50 (D) mm

**Part No** **P1099**

**Material** Forged Steel



## Flexiband Tool

Tensioning/cutting tool vital to ensure Jubilee Flexiband is fastened correctly.

**Weight** 1.88 kg

**Dimensions** 245 (L) x 110 (W) x 80 (D) mm

**Part No** **FBT**

**Material** Forged Steel









### Jubilee Clips Limited

Owens Way, Gads Hill, Gillingham, Kent, ME7 2RS, United Kingdom.

**Tel:** +44 1634 281200

**Email:** [sales@jubileeclips.co.uk](mailto:sales@jubileeclips.co.uk)

|  [www.jubileeclips.co.uk](http://www.jubileeclips.co.uk)

|  [www.jubileeclips.de](http://www.jubileeclips.de)



Jubilee Clips Ltd



Jubilee Clips Ltd

Jubilee®, is a registered trademark of Jubilee Clips Limited

We reserve the right, without prior notice, to alter the materials used to accord with new and/or improved specifications.

**Please note:** All technical data is for comparison purposes only.

There are many variables in each application, such as hose, ferrule and medium, which make it impossible to provide data that is universally accurate. If you have a specific application, please contact us directly for technical assistance.

