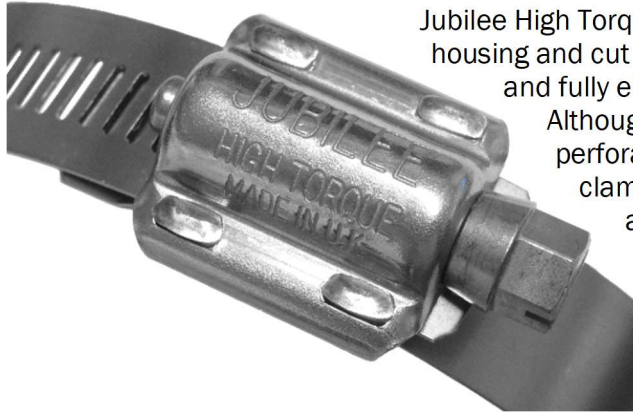


HIGH TORQUE

Our High Torque Clips are the strongest worm-drive clamps available. The high clamping forces make this clip suitable for heavy duty applications where stubborn leakage or vibration issues make lesser clips and clamps unsuitable.

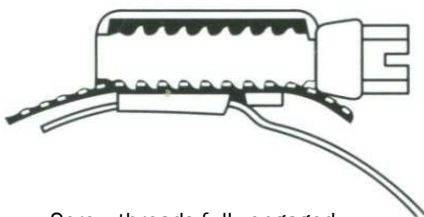


Jubilee High Torque clips are made of all 304 or 316 stainless steel, with a two part housing and cut through band, keeping the band straight at the point of engagement and fully engaging all of the screw thread; giving a superior tightening torque. Although not suitable for use on soft hoses, where the high forces and perforated band may cut into the hose, they are ideal where a high clamping force is required and with a flexible band material they can achieve a high level of friction even against a smooth surface such as a metal pole.

With a wide clamping range compared to alternative heavy duty clamps, stock requirements are reduced. The flexible band also offers better sealing at lower torques than nut and bolt style heavy duty clamps, which, combined with weight saving benefits, make Jubilee High Torque Clips a versatile and superior heavy duty clamp.

- Conform to SAE J1508 type HD
- Lloyds Register type approval for use in Marine, Offshore and Industrial applications and for use on reinforced hoses
- 8mm A/F slotted screw
- All 304 stainless steel, or, all 316 stainless steel
- Twice the tightening torque of standard worm drive hose clips which creates more than twice the band tension for stubborn leakage and high vibration applications
- Breaking torque of 17 Nm is comparable to conventional 'T' bolt clamps of equal size
- Recommended tightening torque 11.9 Nm (106 lbs in)

SECTION 'A'- 'A'



Screw threads fully engaged

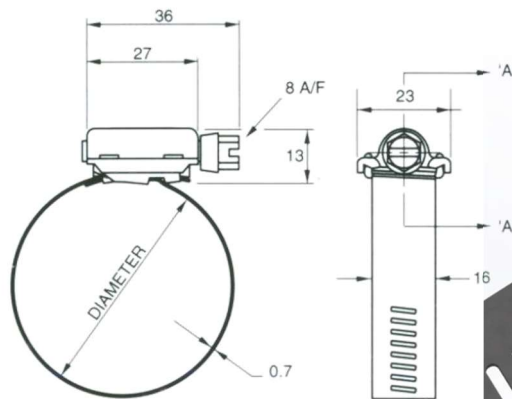
Available in

304 Stainless Steel

316 Stainless Steel



HIGH TORQUE 304 Stainless Steel



All dimensions in mm



| Part No. | Adjustment | | Band Width mm | Band Thickness mm | Recommended Torque Nm | Maximum Torque Nm | Maximum Pressure PSI | Part No. |
|----------|------------|---|---------------|-------------------|-----------------------|-------------------|----------------------|----------|
| | mm | Inches | | | | | | |
| HT035 | 20- 35 | 3/4-1 ³ / ₈ | 15.7 | 0.7 | 11.9 | 17.0 | 304.5 | HT035 |
| HT040 | 25- 40 | 1-1 ⁵ / ₈ | 15.7 | 0.7 | 11.9 | 17.0 | 304.5 | HT040 |
| HT045 | 25- 45 | 1-1 ³ / ₄ | 15.7 | 0.7 | 11.9 | 17.0 | 304.5 | HT045 |
| HT050 | 30- 50 | 1 ¹ / ₄ -2 | 15.7 | 0.7 | 11.9 | 17.0 | 304.5 | HT050 |
| HT055 | 35- 55 | 1 ³ / ₈ -2 ¹ / ₈ | 15.7 | 0.7 | 11.9 | 17.0 | 153.0 | HT055 |
| HT060 | 40- 60 | 1 ⁵ / ₈ -2 ³ / ₈ | 15.7 | 0.7 | 11.9 | 17.0 | 153.0 | HT060 |
| HT065 | 45- 65 | 1 ³ / ₄ -2 ¹ / ₂ | 15.7 | 0.7 | 11.9 | 17.0 | 153.0 | HT065 |
| HT070 | 40- 70 | 1 ⁵ / ₈ -2 ³ / ₄ | 15.7 | 0.7 | 11.9 | 17.0 | 153.0 | HT070 |
| HT080 | 60- 80 | 2 ³ / ₈ -3 ¹ / ₈ | 15.7 | 0.7 | 11.9 | 17.0 | 153.0 | HT080 |
| HT095 | 70- 95 | 2 ³ / ₄ -3 ³ / ₄ | 15.7 | 0.7 | 11.9 | 17.0 | 153.0 | HT095 |
| HT100 | 80-100 | 3 ¹ / ₈ -4 | 15.7 | 0.7 | 11.9 | 17.0 | 66.0 | HT100 |
| HT120 | 90-120 | 3 ¹ / ₂ -4 ³ / ₄ | 15.7 | 0.7 | 11.9 | 17.0 | 66.0 | HT120 |
| HT140 | 110-140 | 4 ³ / ₈ -5 ¹ / ₂ | 15.7 | 0.7 | 11.9 | 17.0 | 66.0 | HT140 |
| HT160 | 130-160 | 5 ¹ / ₈ -6 ¹ / ₄ | 15.7 | 0.7 | 11.9 | 17.0 | 66.0 | HT160 |
| HT180 | 150-180 | 5 ⁷ / ₈ -7 | 15.7 | 0.7 | 11.9 | 17.0 | 30.0 | HT180 |
| HT200 | 170-200 | 6 ³ / ₄ -7 ⁷ / ₈ | 15.7 | 0.7 | 11.9 | 17.0 | 30.0 | HT200 |
| HT220 | 190-220 | 7 ¹ / ₂ -8 ⁵ / ₈ | 15.7 | 0.7 | 11.9 | 17.0 | 30.0 | HT220 |
| HT240 | 210-240 | 8 ¹ / ₄ -9 ¹ / ₂ | 15.7 | 0.7 | 11.9 | 17.0 | 30.0 | HT240 |
| HT260 | 230-260 | 9-10 ¹ / ₄ | 15.7 | 0.7 | 11.9 | 17.0 | 30.0 | HT260 |
| HT280 | 250-280 | 9 ⁷ / ₈ -11 | 15.7 | 0.7 | 11.9 | 17.0 | 30.0 | HT280 |
| HT300 | 270-300 | 10 ⁵ / ₈ -11 ³ / ₄ | 15.7 | 0.7 | 11.9 | 17.0 | 30.0 | HT300 |
| HT320 | 290-320 | 11 ³ / ₈ -12 ¹ / ₂ | 15.7 | 0.7 | 11.9 | 17.0 | 30.0 | HT320 |
| HT340 | 310-340 | 12 ¹ / ₄ -13 ³ / ₈ | 15.7 | 0.7 | 11.9 | 17.0 | n/a | HT340 |
| HT360 | 330-360 | 13-14 ¹ / ₈ | 15.7 | 0.7 | 11.9 | 17.0 | n/a | HT360 |
| HT380 | 350-380 | 13 ³ / ₄ -15 | 15.7 | 0.7 | 11.9 | 17.0 | n/a | HT380 |
| HT400 | 370-400 | 14 ¹ / ₂ -15 ³ / ₄ | 15.7 | 0.7 | 11.9 | 17.0 | n/a | HT400 |
| HT420 | 390-420 | 15 ³ / ₈ -16 ¹ / ₂ | 15.7 | 0.7 | 11.9 | 17.0 | n/a | HT420 |
| HT440 | 410-440 | 16 ¹ / ₈ -17 ¹ / ₄ | 15.7 | 0.7 | 11.9 | 17.0 | n/a | HT440 |
| HT460 | 430-460 | 17-18 ¹ / ₈ | 15.7 | 0.7 | 11.9 | 17.0 | n/a | HT460 |
| HT480 | 450-480 | 17 ³ / ₄ -18 ⁷ / ₈ | 15.7 | 0.7 | 11.9 | 17.0 | n/a | HT480 |
| HT500 | 470-500 | 18 ¹ / ₂ -19 ⁵ / ₈ | 15.7 | 0.7 | 11.9 | 17.0 | n/a | HT500 |
| HT520 | 490-520 | 19 ⁵ / ₁₆ -20 ¹ / ₂ | 15.7 | 0.7 | 11.9 | 17.0 | n/a | HT520 |

Quality Assurance



SAE J1508 Surface Vehicle Standards-Hose Clamp Specifications, Type HD is referenced in the quality control methods for the design/manufacture of the Jubilee High Torque Range of clips.

Corrosion Resistance

1000 hours NSS Test

Fastening

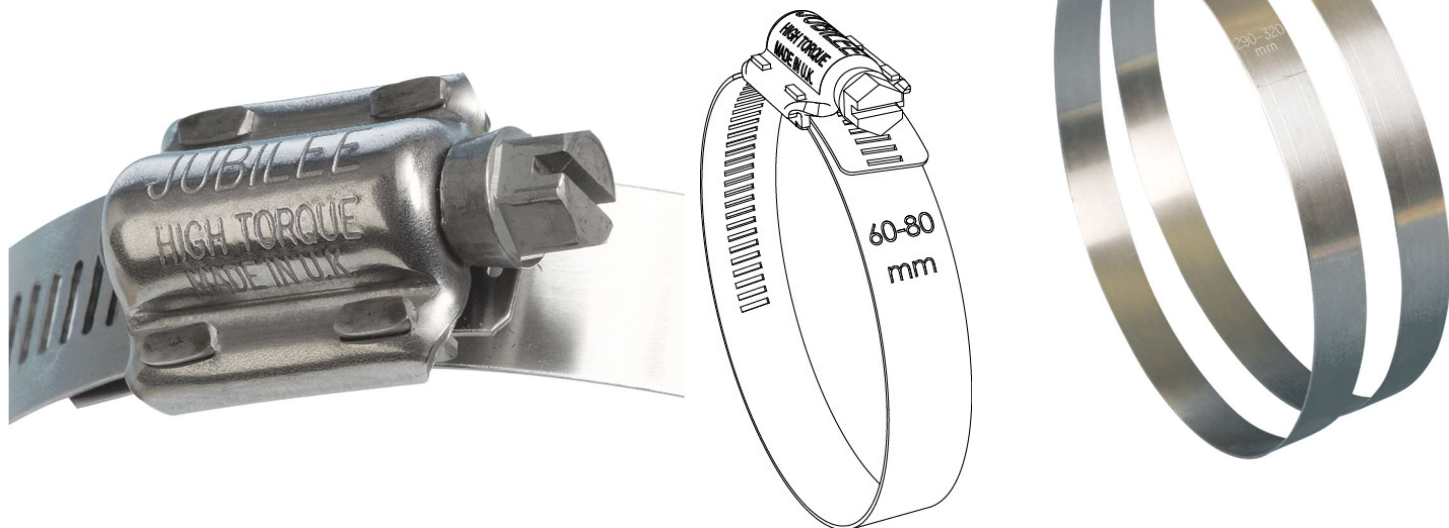
8mm A/F screw

Industry Recommendations



304 Stainless Steel

HIGH TORQUE 316 Stainless Steel



| Part No. | Adjustment mm | Adjustment Inches | Band Width mm | Band Thickness mm | Recommended Torque Nm | Maximum Torque Nm | Maximum Pressure PSI | Part No. |
|------------|------------------|---|------------------|----------------------|-----------------------------|-------------------------|----------------------------|------------|
| HT035SS316 | 20- 35 | 3/4-1 ³ / ₈ | 15.7 | 0.7 | 11.9 | 17.0 | 304.5 | HT035SS316 |
| HT040SS316 | 25- 40 | 1-1 ⁵ / ₈ | 15.7 | 0.7 | 11.9 | 17.0 | 304.5 | HT040SS316 |
| HT045SS316 | 25- 45 | 1-1 ³ / ₄ | 15.7 | 0.7 | 11.9 | 17.0 | 304.5 | HT045SS316 |
| HT050SS316 | 30- 50 | 1 ¹ / ₄ -2 | 15.7 | 0.7 | 11.9 | 17.0 | 304.5 | HT050SS316 |
| HT055SS316 | 35- 55 | 1 ³ / ₈ -2 ¹ / ₈ | 15.7 | 0.7 | 11.9 | 17.0 | 153.0 | HT055SS316 |
| HT060SS316 | 40- 60 | 1 ⁵ / ₈ -2 ³ / ₈ | 15.7 | 0.7 | 11.9 | 17.0 | 153.0 | HT060SS316 |
| HT065SS316 | 45- 65 | 1 ³ / ₄ -2 ¹ / ₂ | 15.7 | 0.7 | 11.9 | 17.0 | 153.0 | HT065SS316 |
| HT070SS316 | 40- 70 | 1 ⁵ / ₈ -2 ³ / ₄ | 15.7 | 0.7 | 11.9 | 17.0 | 153.0 | HT070SS316 |
| HT080SS316 | 60- 80 | 2 ³ / ₈ -3 ¹ / ₈ | 15.7 | 0.7 | 11.9 | 17.0 | 153.0 | HT080SS316 |
| HT095SS316 | 70- 95 | 2 ³ / ₄ -3 ³ / ₄ | 15.7 | 0.7 | 11.9 | 17.0 | 153.0 | HT095SS316 |
| HT100SS316 | 80-100 | 3 ¹ / ₈ -4 | 15.7 | 0.7 | 11.9 | 17.0 | 66.0 | HT100SS316 |
| HT120SS316 | 90-120 | 3 ¹ / ₂ -4 ³ / ₄ | 15.7 | 0.7 | 11.9 | 17.0 | 66.0 | HT120SS316 |
| HT140SS316 | 110-140 | 4 ³ / ₈ -5 ¹ / ₂ | 15.7 | 0.7 | 11.9 | 17.0 | 66.0 | HT140SS316 |
| HT160SS316 | 130-160 | 5 ¹ / ₈ -6 ¹ / ₄ | 15.7 | 0.7 | 11.9 | 17.0 | 66.0 | HT160SS316 |
| HT180SS316 | 150-180 | 5 ⁷ / ₈ -7 | 15.7 | 0.7 | 11.9 | 17.0 | 30.0 | HT180SS316 |
| HT200SS316 | 170-200 | 6 ³ / ₄ -7 ⁷ / ₈ | 15.7 | 0.7 | 11.9 | 17.0 | 30.0 | HT200SS316 |
| HT220SS316 | 190-220 | 7 ¹ / ₂ -8 ⁵ / ₈ | 15.7 | 0.7 | 11.9 | 17.0 | 30.0 | HT220SS316 |
| HT240SS316 | 210-240 | 8 ¹ / ₄ -9 ¹ / ₂ | 15.7 | 0.7 | 11.9 | 17.0 | 30.0 | HT240SS316 |
| HT260SS316 | 230-260 | 9-10 ¹ / ₄ | 15.7 | 0.7 | 11.9 | 17.0 | 30.0 | HT260SS316 |
| HT280SS316 | 250-280 | 9 ⁷ / ₈ -11 | 15.7 | 0.7 | 11.9 | 17.0 | 30.0 | HT280SS316 |
| HT300SS316 | 270-300 | 10 ⁵ / ₈ -11 ³ / ₄ | 15.7 | 0.7 | 11.9 | 17.0 | 30.0 | HT300SS316 |
| HT320SS316 | 290-320 | 11 ³ / ₈ -12 ¹ / ₂ | 15.7 | 0.7 | 11.9 | 17.0 | 30.0 | HT320SS316 |
| HT340SS316 | 310-340 | 12 ¹ / ₄ -13 ³ / ₈ | 15.7 | 0.7 | 11.9 | 17.0 | n/a | HT340SS316 |
| HT360SS316 | 330-360 | 13-14 ¹ / ₈ | 15.7 | 0.7 | 11.9 | 17.0 | n/a | HT360SS316 |
| HT380SS316 | 350-380 | 13 ³ / ₄ -15 | 15.7 | 0.7 | 11.9 | 17.0 | n/a | HT380SS316 |
| HT400SS316 | 370-400 | 14 ¹ / ₂ -15 ³ / ₄ | 15.7 | 0.7 | 11.9 | 17.0 | n/a | HT400SS316 |
| HT420SS316 | 390-420 | 15 ³ / ₈ -16 ¹ / ₂ | 15.7 | 0.7 | 11.9 | 17.0 | n/a | HT420SS316 |
| HT440SS316 | 410-440 | 16 ¹ / ₈ -17 ¹ / ₄ | 15.7 | 0.7 | 11.9 | 17.0 | n/a | HT440SS316 |
| HT460SS316 | 430-460 | 17-18 ¹ / ₈ | 15.7 | 0.7 | 11.9 | 17.0 | n/a | HT460SS316 |
| HT480SS316 | 450-480 | 17 ³ / ₄ -18 ⁷ / ₈ | 15.7 | 0.7 | 11.9 | 17.0 | n/a | HT480SS316 |
| HT500SS316 | 470-500 | 18 ¹ / ₂ -19 ⁵ / ₈ | 15.7 | 0.7 | 11.9 | 17.0 | n/a | HT500SS316 |
| HT520SS316 | 490-520 | 19 ⁵ / ₁₆ -20 ¹ / ₂ | 15.7 | 0.7 | 11.9 | 17.0 | n/a | HT520SS316 |

Quality Assurance



SAE J1508 Surface Vehicle Standards-Hose Clamp Specifications, Type HD is referenced in the quality control methods for the design/manufacture of the Jubilee High Torque Range of clips.

316 Stainless Steel

Corrosion Resistance

2000 hours NSS Test

Fastening

8mm A/F screw

Industry Recommendations

