



Material Safety Data Sheet



Section 1 Company and Product Identification

L. Robinson & Company (Gillingham) Limited,
 Incorporating Jubilee® Clips Limited
 Owens Way, Gads Hill,
 Gillingham,
 Kent,
 ME7 2RS, UK

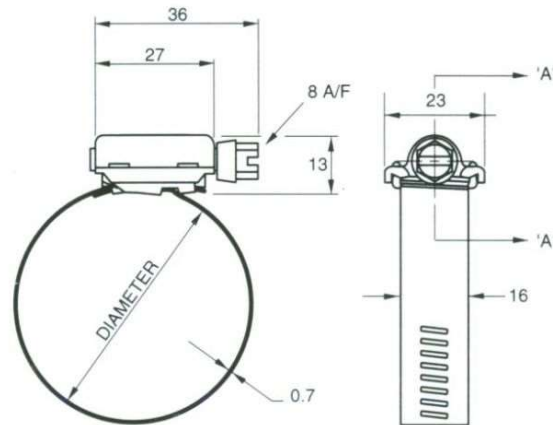
Tel: +44 (0)1634 281200

Fax: +44 (0)1634 280101

Email: sales@jubileeclips.co.uk

http:// www.jubileeclips.co.uk

Jubilee® High Torque 316 Stainless Steel (W5) Range,



All dimensions in mm

Part Number	Adjustment		Band Width mm	Band Thickness mm	Recommended Torque Nm	Max Torque Nm	Recommended Max Pressure PSI
	mm	Inches					
HT035SS316	20-35	¾-1¾	15.7	0.7	11.9	17	304.5
HT040SS316	25-40	1-1¾	15.7	0.7	11.9	17	304.5
HT045SS316	25-45	1-1¾	15.7	0.7	11.9	17	304.5
HT050SS316	30-50	1¼-2	15.7	0.7	11.9	17	304.5
HT070SS316	40-70	1½-2¾	15.7	0.7	11.9	17	153.0
HT080SS316	60-80	2¾-3¾	15.7	0.7	11.9	17	153.0
HT095SS316	70-95	2¾-3¾	15.7	0.7	11.9	17	153.0
HT100SS316	80-100	3¾-4	15.7	0.7	11.9	17	66.0
HT120SS316	90-120	3½-4¾	15.7	0.7	11.9	17	66.0
HT140SS316	110-140	4¾-5½	15.7	0.7	11.9	17	66.0
HT160SS316	130-160	5¾-6¾	15.7	0.7	11.9	17	66.0
HT180SS316	150-180	5¾-7	15.7	0.7	11.9	17	30.0
HT200SS316	170-200	6¾-7¾	15.7	0.7	11.9	17	30.0
HT220SS316	190-220	7½-8¾	15.7	0.7	11.9	17	30.0
HT240SS316	210-240	8¾-9½	15.7	0.7	11.9	17	30.0
HT260SS316	230-260	9-10¾	15.7	0.7	11.9	17	30.0
HT280SS316	250-280	9¾-11	15.7	0.7	11.9	17	30.0
HT300SS316	270-300	10¾-11¾	15.7	0.7	11.9	17	30.0
HT320SS316	290-320	11¾-12½	15.7	0.7	11.9	17	30.0
HT340SS316	310-340	12¼-13¾	15.7	0.7	11.9	17	n/a
HT360SS316	330-360	13-14¾	15.7	0.7	11.9	17	n/a
HT380SS316	350-380	14½-15	15.7	0.7	11.9	17	n/a
HT400SS316	370-400	13¾-15¾	15.7	0.7	11.9	17	n/a
HT420SS316	390-420	15¾-16½	15.7	0.7	11.9	17	n/a
HT440SS316	410-440	16¾-17¾	15.7	0.7	11.9	17	n/a
HT460SS316	430-460	17-18¾	15.7	0.7	11.9	17	n/a
HT480SS316	450-480	17¾-18¾	15.7	0.7	11.9	17	n/a
HT500SS316	470-500	18½-19¾	15.7	0.7	11.9	17	n/a
HT520SS316	490-520	19½/16-20½	15.7	0.7	11.9	17	n/a

Section 2 Composition/Information on Ingredients

Band and housing: Composition/Information on constituents of iron alloy.

Manganese	< 2%
Chromium	16% - 18%
Nickel	10% - 14%
Mo	2% - 3%

Other elements vary such as Si, Cu, Ti, in each alloy composition and are generally not classified as hazardous, or are below the concentration levels for classification of these alloys as hazardous, and are not subject to recognised exposure limits.

Section 3 First Aid Measures

Inhalation:	There are no specific symptoms associated with steel in the product forms.
Skin:	There are no specific symptoms associated with steel in the product forms.
Eyes:	Not applicable.
Ingestion:	Not applicable.

Section 4 Fire Fighting Measures

Non flammable

Section 5 Handling and Storage

Store in a dry area

Section 6 Physical and Chemical Properties

Colour:	Metallic grey/silver
Odour:	None
Form/state:	Solid
Melting point:	1454 °C
Max service temp:	870 °C
Min service temp:	-196 °C
Magnetism:	1.008 μ
Resistance:	72 μΩ
Density:	8.03 g/cm ³

Section 7 Stability and Reactivity

Stability:	Stable in normal condition
Reacts with:	Reacts with strong acids, and hydrogen is then one of the substances emitted.
Corrosion Resistance:	NSS 2000hours

Section 8 Toxicological Information

Nickel is classified as a skin sensitizer however numerous patch tests have established that most stainless steels do not cause sensitization, but a few types may result in allergic skin reactions in sensitized individuals after prolonged contact.

No carcinogenic effects resulting from exposure to stainless steels have been reported, either in epidemiological studies or in tests with animals.

Section 9 Ecological Information

No ecological effects are known for the product as a whole.

Section 10 Disposal Considerations

Disposal method: Recyclable, Jubilee® Clips' High Torque 316 Stainless Steel Range are made from key raw material for the production of new stainless steel. Steel is the world's most recycled construction material and can be recycled with retained material properties.

Section 11 Transport Information

No special requirements are necessary in transporting these products.

Section 12 Regulatory Information

This product conforms to EU Regulation 1097/2006 (REACH)

This product is compliant with EU directive 2011/65/EU (ROHS2)

BS EN ISO 9001:2008 FM00547

BS EN ISO 14001:2004 EMS573195

Lloyds Register Type Approval Certificate number LR21457903TA

Quality Assurance:



Section 13 Other Information

The information above is believed to be accurate and represents the best information currently available to L. Robinson & Co Ltd. However, L. Robinson & Co Ltd make no warranty of merchantability or any other warranty, expressed or implied, with respect to such information, and we assume no liability resulting from its use. Users should make their own investigations to determine the suitability of the information for their particular purposes. In no event shall L. Robinson & Co Ltd be liable for any claims, losses, or damages of any third party or for lost profits or any special, indirect, incidental, consequential or exemplary damages, howsoever arising, even if L. Robinson & Co Ltd has been advised of the possibility of such damages.

Document Issue Date: 1st March 2023

Revision Number: 12